



Smoke Signals

Issue 226

www.smokesignalscn.com

April 2020

SMOKE SIGNALS GOES DIGITAL

These are extraordinary times. We have just had our first ever on line editorial meeting and made the decision to suspend physical printing and distribution for the time being. As we usually print 900 copies, there are many households missing out on Smoke Signals. As the coronavirus threat is likely to be with us for some months, we need to encourage as many locals as possible to subscribe to our on line edition. Smoke Signals will continue to be produced every two months but only on line. Please encourage your friends and neighbours to go to our on-line archive

www.smokesignalscn.com where they can download the current edition and future editions until normality returns.

There has never been a more important time for communities to work together. Physical isolation need not mean social isolation – phone, email, Facebook ...there are many ways to keep in touch and support each other, particularly the most vulnerable in our community. Tasmania is in a fortunate position and, if we all follow the social distancing guidelines, we have a good chance of minimising the effect on our community, society and economy.

While these moments of crisis bring out the best in most people, the opposite can be the case. Only last week we had break ins at the Hillwood Cafe and the Hillwood Strawberry Farm. Please be vigilant and report anything suspicious to police on 131444.

The coming months will be particularly difficult for small business, so let's support our local businesses so they will still be there for us when better times return:

Windermere Cafe and Gift Shop: Windermere Cafe and Gift Shop: Opening hours will vary - best to check Fleur's Facebook page: <https://www.facebook.com/windermerecafe/>

Windermere Cafe & Gift Shop 6328 1303

Marigolds on the Tamar (Hillwood Cafe): Pieter & Jan have an extensive takeaway menu and are open 10am to 4pm Wednesday to Sunday - ph 6311 0686

Lee's Orchards: Brendon will continue to open Thursday and Friday 9am to 5pm with new season fruit and produce. Only four people at a time in the shop. Check their Facebook page <https://www.facebook.com/Lees.Orchard.Dilston/> 6328 1158

Mount Direction Service Station: Normal hours at present but may be reviewed. 6394 8364

Signal Station Tavern: Open Thurs to Saturday 4pm to 8pm for bottleshop and takeaway meals. Check their Facebook page <https://www.facebook.com/pages/category/Pub/The-Signal-Station-Tavern-1986949564677166/> 6394 8228

Fletcher's Nursery: Normal opening hours at present but under review. Check their Facebook page <https://www.facebook.com/fletcherandconursery/> 0432 522 870

Eagle Carpet Care: Business as usual. <https://www.facebook.com/eaglecarpetcaredtas> 6394 9135 or 0438 778 577

Martin's Mowing & Maintenance: Business as usual. 0419 501 819

TDY Motors Mount Direction: Closed till April 27 then to be reviewed. <https://www.facebook.com/TDYMotors/> 6394 8457



BIRDS OF THE TAMAR By Jon Hosford

State of our Birds

“Little Penguins are extremely vulnerable when they are on land, so penguins in their breeding colonies are easy pickings for terrestrial predators especially dogs.

This has been born out in colonies across Tasmania with more than 200 penguins being killed in six separate dog attacks last year. Among the most disturbing of these was an incident that occurred at Bicheno where the bodies of 14 penguins were discovered on the foreshore. Then, just a few days later, a second attack resulted in the deaths of five more penguins. It's thought that the same dog or dogs was involved in both of these attacks.

Further it is likely that there have been more attacks that have not been discovered or have not been reported to the authorities.

According to Dr Eric Woehler, convenor of Bird Life Tasmania, dog attacks at penguin colonies were formerly relatively infrequent in Tasmania- perhaps once a year or less often- but now have become an increasingly regular occurrence. Monitoring of the Little Penguins in their colonies indicates that they now spend more time ashore than they have in the past, suggesting that birds attending their nests are now even more susceptible to the ravages of dogs.” Reprinted with permission

from Australian Birdlife Vol.8 No.4 December 2019.

Little penguins moult between February and April, staying ashore for approximately 17 days. Penguins moult to replace their old and worn feathers. They do this so they can maintain a water proof plumage. ... They cannot eat during moult as they are not waterproof and so can't go out to sea to fish.

There is a significant Little Penguin colony at Low Head. The penguins beach at Dotterel Point - the junction of the Tamar River and Bass Strait and may be viewed between October and February by joining a commercial tour run regularly.



Smoke Signals Community Project Grants -Now Extended

Smoke Signals is produced and distributed entirely by volunteers and printed at no cost by Michael Ferguson MP, so all money raised from advertising in the Smoke Signals newsletter is available to fund worthy community projects. Applications are invited from community groups in the 2nd round of grants of up to \$1000 for local projects that will benefit a section of the community over a reasonable period of time. Criteria for eligibility and application forms can be found on our website:

<http://coolclimateclassroom.com/smokesignalscn.com/smokesignals.htm>



WHY BEES LOVE MY GARDEN



By Trixie Gillard & Kerri Curtis

Recently I've been spending more time in the garden and noticed an unexpected proliferation of bumblebees, and a scarcity of honeybees. I've never been a big fan of bumblebees. They seem to be a bit savage with delicate flower heads. Anyway, I was prompted to look up their history in Tasmania and got quite a shock. They're considered to be a feral nuisance, and are rigorously quarantined from the mainland.

Here's what I learned from Department of Primary Industries and Regional Development, Damien Larkins ABC Radio and <https://www.aussiebee.com.au/bumblebeeharm.html>

MULTIPLICATION OF BULLY BUMBLEBEES!



European bumblebees were accidentally, or possibly illegally, introduced to Tasmania as recently as 1992. In that short time a feral population that started from just one or two bees has invaded virtually the whole island, causing the spread of weeds and undesirables such as Solanum, Paterson's curse, gorse and blackberry. These are just some of the plants they're attracted to.

In fact, "feral bumblebees in Tasmania had spread in one decade into all of this island's major vegetation types and are found from sea level up to 1260m above sea level", according to Dr Andrew Hingston. That includes four out of five national parks in our Wilderness World Heritage Area.

These jumbo-sized bees are muscling in on our smaller native bees. They have the nasty habit of biting through flowers to get to the nectar, bypassing that essential step in pollination of having contact with pollen. This could result in fewer native plants and flowers – and just when we're trying to encourage wildflower planting in our area!

Dr Hingston says, "Where you have more bumble bees, the native bees are visiting fewer flowers."

BUMBLEBEES BUILD THEIR NESTS IN ODD PLACES

If you accidentally stumble upon a bumblebee nest, watch out. They can sting repeatedly. Bumblebees hang out in places like woodpiles and compost heaps. They sometimes choose a disused rodent nest in the shed, or old stuffed chairs or sofas. They can even be found in covered drains, or cavities underneath the house and under concrete paths. A bumblebee nest is only a threat if you disturb it by digging it up or by investigating it and poking your fingers into the entrance.

There is talk amongst growers in New Zealand and Australia that bumblebees should be harnessed as pollinators for certain crops because they have a "clever super sonic trick known as buzz pollination" that spreads a cloud of pollen onto nearby flowerheads.

While Tasmania remains free of the Varroa mite, it seems to me that honeybees are our most valuable and productive pollinators.



A bumblebee found (live) in a punnet of raspberries imported into Western Australia from Tasmania .
© 2013 DAFWA

We'd really welcome your comments and ideas.

Please email Kerri Curtis kerridwen51@gmail.com or Trixie Gillard flahulac@bigpond.com with your story or comments for inclusion in the next issue of Smoke Signals. We'd love to hear from you.

GARDEN CLUB NEWS

Birchgrove Gardens, Beaconsfield



Mark, co-creator of Birchgrove Gardens

The beautiful Birchgrove Gardens in Beaconsfield were a wonderful treat for a large number of Garden Club members in February. Mark very kindly opened especially for the group and gave an interesting talk on the development and history of the garden. The property which was purchased in 2013 by Mark and Gwen is the culmination of a life long passion for them both. It was, at the time of purchase, a well-maintained vacant block with a young hedge, conifers and shrubs as well as a stand of birch trees on the western boundary. This stand of birch trees inspired the name of Birchgrove. The garden's maturity belies its age – only six years!!! It was a pleasure to wander and explore the secluded pathways opening into secret garden rooms, and lined with an amazing collection of beautiful perennial plants and shrubs and deciduous trees. For so late in summer, there was an astounding array of flowers and colours. We all agreed it was a credit to Gwen and Mark's talents and dedication to have created such a beautifully advanced garden in such a short period of time. The garden includes a nursery which supplies quality perennial plants and shrubs, specialising in rare or hard to find plants for the garden lover, Garden Club members (including me!) were only too happy to take advantage of this opportunity by collectively purchasing quite a large number of plants. Birchgrove Gardens is open on weekends only from Spring to Autumn, or by special appointment. You can find out more here: <https://birchgrovegardens.com.au/>



Beautiful echinacea at Birchgrove Gardens



Golden yarrow and agapanthus at Birchgrove Gardens

Kings Meadows

March saw us revisiting Wendy and Dennis Butler's beautiful Kings Meadows garden. Wendy and Dennis have lived here for just over a year. The house was built on a double block about 22 years ago. It was designed by architect David Denman and the garden was professionally designed and constructed. Many tonnes of sandstone rock were placed to form steps, terracing and a beautiful water feature consisting of a large pool and waterfall.

The small lawn areas are bordered with concrete, and curved concrete paths with aggregate topping providing access to most of the garden. Amazing views to the mountains are visible from the garden as well as the house. The day we visited was wet (we didn't complain – all rain is welcome) but we did manage to walk around the garden during a break in the rain. Thank you to Wendy and Dennis for a lovely afternoon.



The view to the mountains from Kings Meadows



Dennis Butler by the waterfall



Lucky rabbit in Kings Meadows!



Wendy Butler in her garden

Future Garden Club Gatherings

Sadly, the situation regarding the COVID-19 Pandemic has put a temporary stop to future Garden Club Gatherings. However, we will stay hopeful of a return to our delightful garden community in the not too distant future, and will stay in touch with each other with the establishment of a monthly Community Garden Club Newsletter. If you would like to be a part of the Garden Club community, you would be most welcome. Please contact me.

Kerri Curtis

Email: kerridwen51@gmail.com

Telephone: 0407 447 344



CHURCH NEWS St Matthias' Anglican Church

Since our last Smoke Signals, we've had some wonderfully joyous events at St Matthias' Church. We held our Harvest Festival Market on Feb 22, in glorious weather, with a happy and relaxed crowd basking in the friendly community atmosphere. Thanks to all those who supplied a good range of fruit and vegies, cakes, preserves, flowers and all the wonderful donations for the Silent Auction. Thanks also to those who helped on the day, or came along and joined in. We raised just over \$2800, as well as sharing lovely positive vibes!



Our most recent service had a congregation of 26, even with 7 regulars away for the day, so our future was looking really positive. But nobody expected the repercussions of a microscopic virus to change our world so dramatically!

Bec and Stewart from Swan Bay had their wedding service unfortunately reduced to "family only", though our ladies certainly brightened the day with beautiful flowers. We wish the couple every blessing for their future life together.



The "Christianity Explored" course conducted in the Holy Trinity Parish has been put on hold, but the weekly Bible Study is continuing each Wednesday at 6pm via Zoom over the Internet. This is a free app which is very user-friendly.

However, sadly, the corona virus has halted all our fortnightly services, including at Easter. Weddings and funerals can only go ahead with greatly reduced numbers. On a positive note however, you can now "go to church" from the comfort of your own home! Our rector, Dane Courtney, will record an abbreviated weekly service, including the week's Bible readings, prayers and the sermon, on Youtube. His first on-line service had over 400 hits, and resulted in feedback from Adelaide!

Go to:

<https://www.youtube.com/channel/UCPOUXnDxuiTDwSalWa-rv1g>



Grab a coffee, your ipad or laptop, and relax and listen whenever it suits you. There are difficult times ahead, and the world needs all the hope we can get. Any information updates are posted on our Facebook page (stmatthiaswindermere), or through the church email network. If you are not currently on this list and would like to receive updates via email, contact Dane Courtney on rector@holytrinitylaunceston.org or Margaret hosfordm@bigpond.net.au You can subsequently Unsubscribe at a later date if you wish. Hopefully this pandemic and its health and economic ramifications will pass in time. Meanwhile, we need to keep in contact by phone or email, and maybe it's also time to reconnect spiritually.



EAST TAMAR MENS SHED

Our Tuesday sessions have been successful with a regular attendance of 5 members and an increased level of enquiry from community for projects that keep us interested and sustainable.

Our Children's block project has had high demand in the new school year and the sales of kneading bowls at our Christmas market have inspired members to make these for themselves and for friends with a contribution to the Shed.

A plant propagation bench for the Australian Plant Society Tasmania, plus numerous small projects involving welding, plasma cutting and sandblasting have occupied our metal fabrication members.

An active band of men is kept productive and engaged in conversation and great socialisation at Shed sessions. Unfortunately, we have had to close the Shed in response to the National and State restrictions on gatherings for the indefinite future. We are committed to keep contact with our members during this time and will arrange online meetings as necessary and opportunities for members to join in also.

Let us be brave and adventurous during this time. There are many ways to keep in touch and to support each other.

President : John Moody : 0431 151 766

Secretary: Jon Hosford : 0419 317 808

Email: secretary@easttamarmensshed.org.au



George makes a kneading bowl



Adrian and Brian crafting personal items



ETMS is assisted by
equipment grants
from the Tasmanian
Government.

Newsletter printed by courtesy of
Your local Liberal member—standing up for Bass
Michael Ferguson MP
Web: www.michaelferguson.com
Email: michael.ferguson@dpac.tas.gov.au
Mail: PO Box 537, Launceston 7250
Phone: 6777 1032
Supporting Northern Tasmania



Dilston Fire Brigade



Tasmania Fire Service

Register the fire by calling freecall 1800 000 699

By telling the Tasmania Fire Service about your fire you may help prevent false alarms.

COVID19

The ongoing development of this worldwide pandemic is something not seen in modern times, with the effect on all services none too small.

At the brigade we have had to implement strict hygiene and exposure minimisation procedures to ensure the health and wellbeing of our fire fighters when attending to incidents.

We want to reassure readers of Smoke Signals that there is no reduction in the service delivery to the community, and this is the same for the Hillwood residents where Smoke Signals is also delivered. We are also working closely with our career firefighter counterparts, as we always do, at Rocherlea and Launceston Fire Stations.

We have been promoting the Tasmanian Health Service's recommendations to all Tasmanians via our social media platforms, and we want to reiterate that same advice here in Smoke Signals.

For all ongoing information please keep an eye on the following websites and their respective social media platforms.

<https://www.health.gov.au/news/health-alerts/novel-coronavirus-2019-ncov-health-alert>

<https://www.coronavirus.tas.gov.au/>

RECRUITING 2020

Following our information session held in February, we are pleased to report that as a result we welcome 8 new recruits to our ranks.

We have completed their inductions to the brigade and they were all set to step forth on their Basic Firefighter course...until the current health crisis rose!

We have some challenges now on the delivery of their training as it is predominantly practical based.

However with their patience we are confident of being able to fulfill the requirements in the coming months.

As a brigade we thank them for their continuing commitment, and indeed welcome them warmly to our family!!

CHANGING SEASONS

Being Tasmania the weather has

already started to shift towards the cooler months and we advise that it is time to look at your wood heaters and flues to ensure that these are ready to be used. Feel free to contact the brigade for more information and even a home fire safety check!

Making a plan in case of fire is a key aspect of preparedness and the graphic below give a notional idea on how to prepare an escape plan for your residence.



END OF PERMIT PERIOD

The Tasmania Fire Service has announced the cessation the Fire Permit Period and the sign on John Lees Drive has been taken down. Thankyou to all residents that asked for permits this season and for the registering of burns in general. Please continue to register your burns and it helps us keep a track on fires in our area



www.facebook.com/DilstonFireBrigade
www.facebook.com/TasmaniaFireService

Dilston Fire Brigade Contacts

Raoul Stow	0417 351 423
Paul Blakie	0417 592 424
Ben Jones	0417 877 001
Ken Nolan	0448 320 996



Home Fire Safety

FACT SHEET

Smoke Alarms

Only working smoke alarms save lives!

- You should **install** a photoelectric smoke alarm in each sleeping area (bedroom), hallway and living area. **Smoke alarms** should be supported by a home fire escape plan.
- Test** alarms monthly.
- Vacuum** dust from alarms every six months.
- Replace** batteries once a year. Some alarms have 10 year lithium batteries that do not need replacing every year.
- Mains powered smoke alarms** also have back-up batteries - check with the manufacturer if your model has batteries that need to be replaced regularly, or whether it has a re-chargeable battery.
- Young children are likely to **sleep through** the sound of a smoke alarm, so **you must alert them** to a fire and help them escape to safety.
- Installation** of a smoke alarm is quick and easy. Follow the manufacturer's instructions. Generally, because smoke rises, mounting in the middle of the ceiling is recommended.
- Maximum protection** can be gained from interconnecting smoke alarms - when one smoke alarm operates, all connected alarms will operate.
- All alarms have a **use by date of 10 years**, after this time, the entire alarm must be replaced.

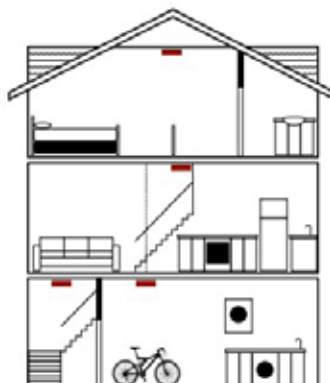


Single Level Homes

Install a photoelectric smoke alarm in every sleeping area (bedroom), hallway and living area.



– Smoke Alarm



Multi Level Homes

Install a photoelectric smoke alarm in every sleeping area (bedroom), hallway, living area and on the ceiling at the top of the stairway connecting the levels.



Tasmania Fire Service

www.fire.tas.gov.au

www.tfseducation.com.au



Important

All smoke alarms must be replaced every 10 years.



www.fire.tas.gov.au

Protect what you value!



Home Fire Safety

FACT SHEET

Fire extinguishers & fire blankets



REMEMBER – Saving lives through a quick escape is far more important than saving property.

You should be trained in the use of an extinguisher or fire blanket to use them safely and effectively.

An emergency is not the time to read instructions.

If you do not know how to use a fire extinguisher or fire blanket:

- Get down, get low, get out** – smoke is poisonous, get underneath it on your hands and knees, and crawl to the nearest safe exit.
- Shut the doors behind you to stop the spread of fire.
- Shout **Fire! Fire! Fire!** to warn others.
- Ensure **everyone is out** of the building.
- Get out and stay out** – never go back inside.
- Go to your **safe meeting place** – such as your letterbox.
- Call **triple zero '000'** from a mobile or a neighbour's phone.
- Wait for the Fire Service to arrive.**



Home Fire Safety

FACT SHEET

What to do in a fire

Do these things to safely escape a fire



- Get down, get low, get out** – smoke is poisonous, get underneath it on your hands and knees, and crawl to the nearest safe exit.
- Shut the doors behind you to stop the spread of fire.
- Shout **Fire! Fire! Fire!** to warn others.
- Ensure **everyone is out** of the building.
- Get out and stay out** – never go back inside.
- Go to your **safe meeting place** – such as your letterbox.
- Call **triple zero '000'** from a mobile or a neighbour's phone.
- Wait for the Fire Service to arrive.**



www.fire.tas.gov.au
www.tfseducation.com.au



www.fire.tas.gov.au

Protect what you value!

HAPPY NEWS:

A NEW BABY SON for Candice and Heath Tilain of Hillwood. Isaiah was born on 16th September, a brother for Rafael. Welcome to Hillwood, little man..

SAD NEWS:

Former resident, Patsy Cooper died on 14th February 2020. Patsy and her husband Doug moved to Hillwood quite some years ago. After Doug died, Patsy remained in Hillwood, was a member of Hillwood Ladies Group and spent her last few years in a Nursing home. Our sympathy to Patsy's family.

KIDS CLUB:

Are not meeting until next term, first one to be 1st May depending on the situation with Coronavirus.

HILLWOOD GARDEN CLUB

ANNUAL COMBINED MEETING of Hillwood Garden Club and George Town and Districts Historical Association was held in the Hillwood Hall on Monday February 17th. Guest Speaker for the evening was Tony Walker of Dilston. Tony told us the story of wine growing in Tasmania. His talk was very informative and interesting. The good news is that with the cooler climate in Tasmania, the future for the industry looks promising.



MAYORS ROADSHOW

This is something new. It was held on Sunday February 9th in the Hillwood Hall. Approximately twenty ratepayers attended the Power Point Presentation by the Mayor, Greg Kieser and the General Manager, Shane Power. Showing how the council is run, answering questions. They will be back in about six months. This is well worth attending if you have any questions at all for the Council or want to know how it all works. A couple of councillors, Deputy Mayor Tim Harris and Councillor Barwick also attended and participated.



HISTORY ROOM.

Three members of the Hillwood Progress Association's Historical Subcommittee have undertaken a course on using the Mosaic cataloguing system.

Some display cabinets surplus to requirement have been generously donated to our History Room from George Town RSL.

CAN YOU BELIEVE IT?

Actually, you probably can by now. Someone was spotted coming out of the community toilets near the Hillwood Pontoon with a couple of toilet rolls in hand!!

Many EVENTS have been CANCELLED due to Coronavirus. Among them are the following:

Anzac Day Dawn Service and Breakfast.

Jeff's 90th Celebration

Friday night meals at the Football Club.

Football games.

Unfortunately, news is a little light on for this issue. Please feel free to contact me on nancydonnelly@bigpond.com or 0431613484 if you have any news you would like me to include.

I hope everyone is keeping well and safe and that this horrible situation clears up sooner rather than later. We are isolating as much as possible. We went out for the first time in two weeks as I thought it advisable to set up internet banking! The sacrifices we make! We seldom ate out when raising the children, like everybody else but we have got used to going out for meals, now back to doing our own cooking again. Missing Friday nights at the footy club!

HILLWOOD FIRE BRIGADE NEWS from BRIGADE CHIEF, ELAINE BURNS

Due to the covid 19 virus we had to cancel our recruitment day until further notice, if anyone wants some information please feel free to contact me.

Responses to call outs will be business as usual.

A timely reminder now it is getting cooler is to check smoke alarms and to clean wood heater flues.

Elaine Burns

0417540665

It is not boring at all
to stay in the house.
But how come a bag
of rice has 7,456
pieces and the other
bag 7,398?

Hilltop 7g on FB

NEW PUBLIC BENCHES HAVE ARRIVED



Day 2 without
sports. Found
a lady sitting
on my couch.
Apparently
she's my wife.
She seems
nice. 😎

Our cleaning lady just called
and told us she will be working
from home and will send us
instructions on what to do.



Today's drink special:
the Quarantini



It's just a
regular martini
but you
drink it alone,
in your house

EBSolar
EST. 2008

STAY AT HOME SOLAR PACKAGE

In these times of uncertainty we are proud to stand beside you as fellow Tasmanians. Since 2008 we have experienced challenges but nothing like what is going on now.

The COVID-19 crisis has compelled us to innovate, trade differently and improve.

We have reached out to our finance partners, supply partners, and CEC installers and we have a plan! We have developed our **STAY AT HOME SOLAR** savings package with no deposit and we will pay your repayments for 3 months - that's **90 days of free power!**

Our exclusive Family Classic Tier 1 systems will give you guaranteed performance and savings. If you are seeking electricity independence and security, battery storage is also available.

To help cover costs we have developed a 3 step P.A.Y.S. (pay as you save) programme:

Step 1 Get in touch by calling 0459 646 135 or email bmelville@ebsolar.com.au We are ready to answer any questions you may have. We can then review your current energy usage and correctly size a system to suit your individual needs. You will receive a design including the panel roof layout, plus a detailed projection of your savings, incorporating all the seasonal changes in production and your consumption. As a general size guide, refer to the table below:

Current quarterly bill	System Size Required
\$150-\$300	3-3.5 kW
\$300-\$500	5-6.6 kW
\$500-\$1000+	10 kW

Step 2 Our finance partners will receive your information and approve the finance, we have a 93% approval rate.

Step 3 The experienced EB Solar team will process the connection application with TasNetworks and any other approvals required. After booking your install, within 3-4 weeks you will be on your way to securing a lifetime of savings.

Take care - the **EB Solar** team.



ebsolar.com.au
51 York St, PO Box 1971 Launceston Tas 7250 Australia
P: 03 6332 6999 | M: 0459 646 135 | E: info@ebsolar.com.au

Broady's Bobcat and Truck Hire

0427 833 090

Email: mpbroady@bigpond.net.au

- Skid Steer Bobcat
- 4.7t Excavator
- 8t Tip Truck
- Post Hole Diggers
- Forks
- Spreader Bar
- Rock Breaker
- Rock Grab

Located in Windermere.
Willing to travel.



Ivan Dean MLC

Your local Independent
Member for Windermere -
Legislative Council



*I am frequently in
the Hillwood and
Dilston areas and
happy to catch up
should I be able to
assist with any
issues.*

Phone: 03 6324 2005

Mobile: 0417 364 375

Email: ivan.dean@parliament.tas.gov.au

Henty House

One Civic Square

Launceston TAS 7250

Peter Gutteridge

**BUILDING &
MAINTENANCE**

**Bathroom and Kitchen
Renovations,
Decks, Pergolas,
Painting, Paving,
Tiling and General
Maintenance**

**0448990314
63281391**



0419 501 819

**Martin's Mowing
and Maintenance**

Employ a Local

*Ride-on Mowing
Brushcutting
Gardening
Rubbish Removal
Chainsaw Work
General Maintenance etc.*

Friendly & Reliable

Advertising Rates

Casual Placement

1/9 page(55x93mm)

\$30

6 editions

1/9 page

\$150

For other size ad please
contact smoke signals

Advertising copy is
preferred in .pdf

*Windermere
Watches*



Service & Repairs
to all

Wrist Watches and Pocket Watches

Jeff Wynne

Phone 6328 1544 or 0417 843 943



Justin Goebel

0458435062

justin.goebel@ljhooker.com.au

LJ Hooker Launceston

launceston.ljhooker.com.au

Justin Goebel

Justin has been in property sales for over 10 years with extensive experience in residential property sales throughout Launceston and outer areas.

As director of LJ Hooker Launceston and large focus on client and customer service, you can rest assured that you are in great hands when you are dealing with Justin throughout your real estate sale or transaction,



If you are thinking of selling & would like a no pressure, no obligation, free appraisal, please call me to arrange a time.

Sharon Fahey

Local Rural Agent since 2002

0409 188 249

Elders Towns Shearing



Towns Shearing

58 Elizabeth Street,
Launceston

Community Contacts

FIRE:000

Dilston Fire Brigade

Raoul Stow 0417 351 423

Hillwood Fire Brigade

Elaine Burns 0417 540 665

Windermere Cafe

6328 1303

Dilston Hall

Lizzie Benstead: 0409 974 508

St Matthias Church

June: 0411 567 029

Jenny:0419 544 266

Playgroup

Amy: 0413 394 523

Dilston/Swan Bay/Windermere Garden Club

Kerri: 0407 447 344

East Tamar Mens Shed

John: 0431 151 766

Jon 0419 317 808

Book Discussion Group

Jess: 0428 658 988

Jess.Panday@education.tas.gov.au

Justice of The Peace

Darren Pullen: 0439 912 862

Copy For NEXT ISSUE Due

Friday, 29th May

Email address:

smokesignals@bigpond.com

Editorial decisions for publication will
be made by Tony Walker:

tony.walker@y7mail.com

Smokesignals on the web:

www.smokesignalscn.com



THE CARPET & UPHOLSTERY CLEANING SPECIALISTS

We clean with the latest innovative technology, truck mounted machines that generates its own hot water, therefore drying your carpets within 3 hours

This technology is also environmentally friendly, and safe for pets

ULTIMATE PACKAGE

- 3 Rooms **PLUS**
- 1 Free Rug or Hallway clean

**ONLY
\$125**

- Book with a friend and save \$10 each
- Senior and concession card discounts
- Custom packages available on application

P. 6394 9135 M. 0438 778 577
Launceston, surrounding Suburbs
ABN: 9643 104 1939

eaglecarpetcare.com.au