

Smoke Signals

Dilston Windermere Swan Bay Newsletter

We're on the web

<http://www.winderdoon.com/community/smokesignals.htm>

Issue 159
August 2009

Rain a Plenty...

Windermere has experienced its wettest June/July since 2003.

An above average amount of 236mm has fallen over this 2 month period, making it one of our significantly wet periods over the time official records have been kept locally since 1927.

Local resident, Pat Hollier, records daily the amount of rain that falls onto her property and submits a record of observations to the Bureau of Meteorology on a monthly basis. A weather station has been established at Acacia House since 1927. Daily rainfall is measured at 9:00am each morning and the amount in the gauge is entered in to a diary.

In viewing the records of these observations since 1929, some interesting statistics

appear.

The median yearly rainfall for Windermere is 810mm. The lowest rainfall recorded in a year was 487.7mm in 1972, and the highest was 1262.9 mm in 1956.

We have all been aware that rainfall in the last 5 years has been below average. It is interesting to note that only 2 years in the past 10 have had above average rainfall.

2005 was a wet year (922.3 mm), with June–December receiving 88% of the rainfall for

The rainfall has replenished our sub-soil water and undoubtedly we can look forward to lovely growth in our gardens over the Spring period.

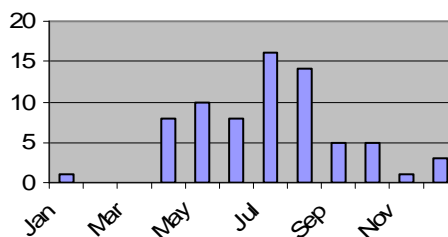
At least one resident found the timing of the rain through her property a little challenging . Local Fire Brigade and

District SES came to the rescue and the potentially damaging situation was saved.

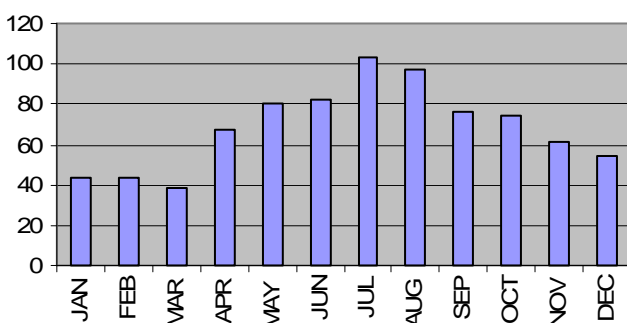
See our Fire Brigade News for a report.

You can see from the frequency graph below that only February and March have not in any year recorded the highest monthly falls over the period 1927 –2008 . July and August have been our consistent high rainfall months.

Which Month is our wettest 1927-2008?
July has been wettest 16 times



Windermere Mean Monthly Rainfall 1927-2008 (mm)



Average monthly
Rainfall

Inside this issue:

Garden Club	2
Fire Brigade News	3
Health Notes	3
Links to the Past	4
Nature Notes	5
Church News	6

Windermere Corner Store

6328 1335

*Hearty breakfasts, great lunches, a
selection of cakes and slices,*

*prepared take-home meals. Takeaway
pizzas, gourmet food lines, catering, ,
wrapping and cards, groceries, gas, bait*

*Home made soup available for cold
winter days*

TRADING HOURS

Mon-Fri 7am – 6pm

Sat 8am-6pm

Sun 8am-5pm

**Follow Tony & Sue Walker
through France & Belgium**

<http://www.flyingfrancos.blogspot.com/>

**The Tour de France with a
local**

Garden Club News by Anna Waterhouse

Our June gathering was at Neil and Merryn McLelland's home.

We settled comfortably inside to enjoy our shared table of food with a good company.

Afterwards we strolled around their garden which goes right to the water's edge. It's an intriguing garden, with small paths, steps with an old windmill and an old horse "Binki", who leans over their fence, constantly asking you for more food. They have a large Tree Dahlia, just waiting for that frost to come and do its job.

The garden was looking very well-cared for and we thank Neil and Merryn for such a good time we shared together.

August Meeting:

Friday August 14th, Rob & Maureen McLaine

September 11th To be announced.



..It's an intriguing garden, with small paths, steps with an old windmill

Copy For NEXT ISSUE

Due

Friday September 25th

For publication first week in October

Email address:
smokesignals@bigpond.com

Or mail to:

454 Windermere Rd. Windermere
7252

WOULD YOU LIKE TO ADVERTISE IN SMOKE SIGNALS?

1/6 Page \$15.00

1/12 Page \$7.50

book an ad in four issues and save:

1/6 Page \$40.00

1/12 Page \$20.00

Small Classifieds, Wanted to sell, etc
\$5 (one insertion)

Community Notices and Fund Raising
Notices are Free !!

Advertisements must be accompanied by full name, address and should state the number of editions that it is to appear in.

Leave advertising copy at the Windermere Store or email to:

smokesignals@bigpond.com

Smokesignals on the web

<http://www.winderdoon.com/communitiy/smokesignals.htm>

Signal Station Tavern

Bar, Lounge & Bottle-O

Bottleshop competitive prices

\$8 meals Thursday evenings

6PM TO 8PM

Friday & Saturday nights- full counter meals 6pm to 8pm

Sundays- 5pm to 8pm

Pizzas & jacket potatoes eat in or take away

PHONE 6394 8228

CLEAN UP ??

ALL TYPES OF GARDENING WORK

CALL JEFF

63281390

0437117396



Creative Memories Scrapbooking

WORKSHOP

Sunday 9th August

and thereafter the 2nd Sunday monthly

12 noon-4pm

Signal Tavern, Mount Direction

Pages, papers & stickers supplied

Afternoon tea provided

- Make memories last forever
- Show your photos in the best way possible
- Start a hobby and join the fun
- Meet new people and make new friends

For bookings call Bev Foy

6394 8426 or 0403544441



FIRE BRIGADE NEWS by Rob Montague

On Sunday 12 July around 6pm

the Dilston Fire Brigade responded to a call from a local resident who was confronted with a blocked storm water drain causing water to bank up in front of her house to a depth of about 2.5 metres and approaching the lower level of the house. A council employee with pump had been on scene from about two o'clock and was not making a lot of progress due to heavy rain runoff flooding into the catchment. The brigade set up two pumps with four outlet hoses but we soon realised extra assistance was needed, so a call to the S.E.S. eventually saw an additional three high volume pumps assigned to the cause with the aim to lower the water level so as to gain access to the blocked drain. By early morning the drain was unblocked much to the relief of the home owner, whom we must thank for supplying us with hot drinks and food during the evening.

Tasmania fire service specialised skills training courses for volunteers are ongoing year round with several of our members completing Supervise Response and Crew leader courses recently. Current membership remains healthy but any person, female or male, interested in joining our local brigade would be welcome to attend any training session or contact any brigade member for more information.

Brigade Contacts:

Rob Montague	6394 8377 (w)
	6328 1336 (h)
Jason Hingston	Mob 0407392457
Neville Jolly	6326 5860 (h)
	Mob 0417 540230
	Mob 0438 075 534

The Flu and You..... Dr Don Hempton

David Lake

At this time of the year we tend to label all colds the flu, this is not the case as many of us will suffer from head colds, sinusitis etc, these complaints tend to be milder and respond to analgesia and simple cold remedies.

Influenza when it hits is an acute illness with rigors (hot and cold shakes) generalised body ache and often nausea, vomiting and diarrhoea. Avoidance is the best practice, dress properly for the cold, eat well including plenty of citrus fruit, drink plenty of water and practice good hygiene, plenty of hand washing after contact with other people in particular and avoid touching your face as this is often the method of spread (infected person to your hand to your face). Yearly vaccinations play a role if you are elderly or have underlying health problems.

Initial treatment centres around drinking plenty of fluids and simple analgesia (paracetamol or nurofen) if symptoms persist after a few days or if vomiting in particular prevents adequate fluid intake then medical advice is warranted, like wise especially in children if the temperature stays above 38 after Panadol or nurofen seek medical advice. Keep in doors and avoid contact with other people if at all possible.



The water flowing from the hillside through a natural gully, banks up from a blocked drain to come within centimeters of the floor level of the house to the right of the picture.

Photo: Don Hempton

Dr Don Hempton
The Windermere GP
 Is available for consults,
 Strictly by appointment
Ring 6328 1560





Sharon Fahey
0409 188 249



Wayne Rietveld
0418 504 742



Towns Shearing

- You can choose "NO COST ADVERTISING" which means you pay nothing for marketing whether we sell your property or not
- Launceston's Number 1 and most successful Real Estate Company
- Comprehensive Buyer Database
- Two of the most experienced industry consultants specialising in North East Tasmania
- WANTED - Large rural holdings, Lifestyle Hobby Farms, Residential and Subdivisions

That's WHY more and more people are choosing Towns Shearing.

Towns Shearing Real Estate, 58 Elizabeth Street, L'Or

Windermere Cemetry is a link to our past pollution

Walking around an old graveyard may seem more like the stuff of horror movies, but it could actually help save the planet.

That's the message from the Geological Society of Australia, which is calling on individuals, schools and community groups across Australia, to visit their local graveyards and measure the weathering rates of old marble headstones as part of an international project to track shifts in world pollution levels and climate change.

In response to this request, local resident Ian Farquar decided that he had access to the equipment required to make the measurements necessary, and this week a survey was undertaken on 5 headstones at the Windermere cemetery to determine the extent of weathering on the marble headstones as indicative of acid content of rainfall in the district since 1879.

Five measurements were taken on each of five headstones within the cemetery to determine the amount by which the marble had been eroded from the lead filled engraving on the headstones. The acidity of rain over time, erodes the marble, but does not affect the lead, leaving the lead outstanding from the originally flush finish of the headstone.

Differences were measured in fractions of a millimeter and were recorded along with data from the headstones representing a sample of the oldest to the most recent within the cemetery. These data will be added to a database of similar entries from cemeteries around the world to compare the amount of weathering apparent on the marble.

In this way comparative amounts of rainfall acidity can be calculated to assist scientists in determining pollution levels in the district.

The Gravestone Project provides a unique opportunity to gather important information about this weathering from different countries, climates

and pollution environments—and it is also a great way for the wider community to contribute to cutting-edge research on pollution and climate change.



Ian Farquar takes a micrometer measurement on a headstone at Windermere Cemetery.

ljhooker.com

LJHooker

The power of two....for the price of one



Coral Miles

0428 943 258



Debbie Sarich

0408 265 919

We are delighted to announce our new professional partnership combining specialist knowledge across the entire Tamar Valley.

Nothing else has changed; Deb is still a local of over 20 years and prospective Vendors and Purchasers can still expect the same high level of service and communication our clients are accustomed to.



129 Johnstons Rd, Hillwood



327 Rowleys Hill Rd, Karoola



439 Golconda Rd, Lilydale



71 Lalla Rd, Lilydale



79 Jetty Rd, Hillwood



71 Bullocks Head Rd, Mt Direction

HELP! we need more acreage properties

to accommodate both mainland and local buyers



You are invited to a day of Scrapping & Card Creativity

(work on your own craft projects and attend 'make & takes' during the day)

On Saturday August 22nd 2009

From 10:00 'til 5:00 At Dilston War Memorial Hall
East Tamar Highway

Cost \$25:00

Morning tea * lunch* afternoon tea provided *Door
prize* Spot prizes* Raffle

RSVP August 14th 2009 Pat Hollier 63281348 *
Leanne Hollier 0407579145

This Day is to Support The Cancer Council & raise
money for Relay for Life.

WANTED

Local Person for House Cleaning

2 Hrs per fortnight

Prefer Thursday/Friday

Please Phone 63281315

Nature Notes by Jon Hosford The Australian Wood Duck *Chenoneta Jubata*

The Australian Wood Duck is a

medium-sized 'goose-like' duck with a dark brown head and a pale grey body with two black stripes along the back. Males have the darker head and a small dark mane, with a speckled brown-grey breast and a black lower belly and undertail.

The females have a paler head with two white stripes, above and below the eye, a speckled breast and flanks, with a white lower belly and undertail.

In flight, the wings are pale grey above, contrasting with black wingtips, and have a noticeable white bar on the un-

derside (the secondaries).

They walk easily on land and may be seen perching on logs and in trees. They will only take to open water when disturbed. This species is also known as the Maned Duck or the Maned Goose.

Found in grasslands, woodlands, wetlands, it eats grasses, clover, other herbs and occasionally insects.

This species seems to have benefitted from humans with the creation of dams and irrigated crops.

It can be quite destructive of germinating plant shoots, and has been a significant problem to irrigation farmers in the Murray Valley in Victoria and NSW.

These ducks form monogamous breeding pairs which stay together year round. Nests are in a tree hollow over or near water. Hatchlings inhabit the nest for 57 days . Parents then seek safe feeding grounds. Fledglings stay with parents for up to a month after fledging.

I have noticed a colony of these ducks appear again in research of a suitable nesting site on Windermere Farm. They appeared to be ejecting a pair of Starlings who had shown interest in using the hollow in which they had successfully raised a family of 12 last year. We may soon have more ducks to deal with than last year.

Community Contacts - FIRE: 000

Dilston Hall: 6328 1348

St. Matthias Church:

6328 1209

Playgroup: 6328 1196

Garden Club: 63281566

CWA: 6328 1257

Book Discussion Group: 6328 1231

Bird Watching: 6328 1163

FIRE BRIGADE OFFICERS

Rob Montague 6394 8377 (w)

6328 1336 (h)

Jason Hingston Mob 0407392457

Neville Jolly 6326 5860 (h)

Mob 0417 540230

David Lake Mob 0438 075 534



A male Wood Duck . . .A clutch of 8 eggs in a tree hollow at about head height

**ST MATTHIAS
WINDERMERE**



**& HOLY TRINITY
LAUNCESTON**



***THE CONGREGATION OF
ST MATTHIAS, WINDERMERE***

***Take pleasure in inviting the
Windermere Community
to our Services***

ST MATTHIAS

Every 2nd and 4th
Sunday of the month

Our last Service on Sunday the 12th of July was a normal Eucharist Service.

After the normal service we had a very special Memorial Service for Graeme Robert Rosevear "Rosie" - 08.09.1942—22.07.2008. From Western Australia, he was survived by his wife, Brenda, and two children, Blake and Jane.

The Memorial Service was attended by close to fifty of Graeme Rosevear's descendants and friends from Western Australia, Tasmania and other states.



EduHELPnet
serving education

Tuition available locally for Primary or Secondary students

Science * Biology * Primary Maths & Literacy

Jon & Margaret Hosford

Phone: 63281163

Caltex Mount

Direction

Open 7 days per week— 6am to 7pm week-days

8am to 7pm Saturday, 8am to 4pm Sunday

Full grocery lines—fish bait/gear—BBQ Gas

63948364

Full grocery lines— fish bait/gear—
BBQ gas

VARIETY OF TAKEAWAYS & HOT
DRINKS

PHONE ORDERS

6394 8364

This document was created with Win2PDF available at <http://www.win2pdf.com>.
The unregistered version of Win2PDF is for evaluation or non-commercial use only.
This page will not be added after purchasing Win2PDF.