



Smoke Signals

East Tamar Newsletter

We're on the web

<http://www.winderdoon.com/community/smokesignals.htm>

Interim Speed Limits are Short Lived

Recent changes to the speed limits in the district have been causing confusion amongst motorists.

The 80 kph signs north and south of Los Angeles Road exit onto John Lees Drive, installed when the bypass was opened, have been changed to back to 100kph.

A new 100 kph sign has been placed just south of the Windermere Road exit on to John Lees Drive.

Launceston City Council's Director of Infrastructure Services, Mr. Harry Galea, has informed Smokesignals that this is an interim measure to remove the present confusion. "The signs erected last week are an interim measure after DIER recognised the need to clarify the situation", he said.

Changes will remain in force until July .

THEN

John Lees drive will be restricted to 90 kph, except for the built up area of Dilston (Lady Nelson Creek to Peddie Drive), which will become 70kph.

Collector roads will become 70 kph, (Eg. Los Angeles Road), except Windermere Road, which will remain at 50 kph due to curves and the density of housing. It is also recognised that Windermere Road is a shared roadway for pedestrians.



Moving to Launceston?

The fantastic lifestyle, low unemployment, Mediterranean climate, great educational opportunities, low levels of crime and affordable real estate make Launceston an ideal sea-change destination.

For a comprehensive guide on moving to Tasmania visit <http://www.tchange.com.au/index.html>

New Residents' Kit

The Launceston City Council's New Residents' Kit contains information sheets about medical facilities, hospitals, public transport, real estate, child care and schools.

The pack also includes copies of the Council's Trails Brochure, Parks Booklet, Major Works Plan Booklet and Launceston Tamar Valley Visitors' Guide. For a copy of the kit, call the Council on **03 6323 3000**.

Issue 185

June 2013

Inside this issue

Gardening	Page 2
Community Contacts	Page 3
Fire Brigade News	Page 5-6
Hillwood News	Page 7
Birds of The Tamar	Page 9
Church News	Page 10

Windermere Corner Café

6328 1335

Mon-Thurs 7:30—5:30pm

Fri—TGIF as usual

Kitchen closes 7:30pm

Sat-8:00—4:30pm

All your basic essentials ..

Supporting your community

Tourist information centre and tasting room for

Native Point award winning wines.

Try our Take Home Meals

Available Mon-Fri

Phone for your order

Your Cool Climate Garden



Spinach is an ideal Winter Crop

English Spinach is a very natural crop for cool climate gardens. It produces abundantly throughout the year if you sow the correct variety and feed it well with extra blood & bone for nitrogen.

Spinach is low in saturated fat and cholesterol. It is an excellent source of

Copy For NEXT
ISSUE

Due

Friday July 26th
For publication in the
1st week of August

Email address:
smokesignals@bigpond.com

Or mail to:

454 Windermere Rd. Windermere
7252

WOULD YOU LIKE TO
ADVERTISE IN
SMOKE SIGNALS?

1/6 Page \$17.00

Book an ad in four issues and save:

1/6 Page \$51.00

1/12 Page \$27.00

Small Classifieds/Wanted to sell, etc
\$5 (one insertion)

Community Notices and Fund Raising
Notices are Free !!

Advertisements must be
accompanied by full name, address
and should state the number of
editions that it is to appear in.

Leave advertising copy at the
Windermere Store or email to:

smokesignals@bigpond.com

Smokesignals on the web

http://www.winderdoon.com/comm
unity/smokesignals.htm

Niacin and Zinc, and a very good source of
Dietary Fibre, Protein, Vitamins, Calcium, Iron,
Magnesium, Phosphorus, Potassium, Copper and
Manganese. It is also high in Sodium.

For Spring harvest, sow ordinary varieties in
July/ August if at all possible, certainly no later
than mid September.

For early summer harvest sow only summer
varieties.

It is easiest to do this in mid October and early
November for harvest before the end of
February. Spinach is most tolerant of cold
weather so may be sown in late June and
throughout July.

Many of the punnets of seedlings sold by
nurseries run to seed in the warmer weather.

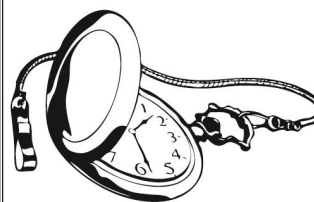
Prepare the bed with 250 gms of Blood & Bone
per square metre. Sow the seeds in shallow
furrows about 1 cm deep .

Thin out to 30 cm spacings as the seedlings
emerge and start to put on size.

You can start to pick the leaves regularly as soon
as they are large enough to eat. 10 plants will be
adequate to feed a family or 4.

Windermere Watches

Service and Repairs to all
Wristwatches and Pocket Watches
Watches bought and sold



Jeff Wynne
0417 843 943
or 6328 1544

www.windermerewatches.com.au

Caltex Mount

Direction

Open 7 days per week– 6am to 7pm
weekdays

8am to 7pm Saturday, 8am to 6pm
Sunday

Full grocery lines– fish
bait/gear– BBQ gas
VARIETY OF TAKEAWAYS &
HOT DRINKS

PHONE ORDERS

6394 8364

Signal Station Tavern

Bar, Lounge & Duncan's

Bottleshop competitive prices

Thursday night specials

\$10

6PM TO 8PM

Choice of 4 different meals

Friday & Saturday nights– full counter meals 6pm
to 8pm

Sundays

All day PIZZA 1:00-7:30pm

Community Contacts - FIRE:000

Dilston Hall:	6328 1348
St. Matthias Church:	6328 1209
Playgroup:	0407 993 616
Garden Club:	63281566
Book Discussion Group:	6328 1231
Bird Watching:	6328 1163
Native Animal Rescue	
<i>Lorraine De Weys</i>	63263502
Men's Shed	6328 1544
FIRE BRIGADE OFFICERS	
Paul Blakie	Mob 0417592424
Neville Jolly	Mob 0417 540230
David Lake	Mob 0438 075 534
Jason Hingston	Mob 0407392457
Raoul Stowe	Mob 0417351423

As an elected representative for the people of Bass it is my responsibility to ensure that I regularly canvas the views of our electorate.

Should you wish to provide feedback, raise issues, suggest ideas or receive our electronic newsletter, please do not hesitate to contact my office.

Northern Suburbs Electorate Office

401B Invermay Road, Mowbray 7248

(03) 6336 5221



Smokesignals acknowledges the continued contribution and support of

Brian Wightman, MHA

in the printing of this newsletter.

Your local residing agent...

If you are looking for a local agent that resides in Windermere Road, knows about local infrastructure and has a good sound knowledge of real estate along the East Tamar area, then please call Sharon Fahey.

Sharon received TOP SALES AGENT award for Towns Shearing for the last financial year, and this year is proving promising as well.

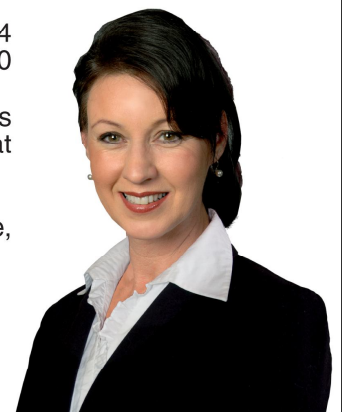
Although the market is challenging, sales are still happening. A recent survey showed approx 57% of people looking on realestate.com are interstate or overseas buyers.

Two properties for sale in the area worth looking at...

322 Windermere Road - Superb position with panoramic water views, federation home, 4 bedroom, 2 living rooms, 2 bathroom, terrific garaging and sheds, under 2 acres - \$539,000

1004 Windermere Road - 5 bedroom brick home with 1 bedroom granny flat, suitable as B&B (STCA), just under half and acre (approx), beautiful position overlooking the water at Swan Bay - \$380,000

For a viewing of these properties or to further discuss a market appraisal of your home, please call Sharon.



Sharon Fahey 0409 188 249



sharonf@tsre.com.au

towns shearing real estate

58 Elizabeth Street, Launceston

Our Neighbourhood Community Grants

Australia Post has launched its new community program - Our Neighbourhood, a national grants program.

Our Neighbourhood Community Grants are open to eligible registered charities and community organisations for amounts between \$1,000 and \$25,000 to support local projects.

Our Neighbourhood Community Grants will be awarded to organisations with projects that help connect local communities and foster inclusion across Australian neighbourhoods.

The Our Neighbourhood program has been designed to provide opportunities for people from varying backgrounds and communities. With a focus on local, it will also extend to regional and remote, the disadvantaged, the culturally diverse and small business. Applications close on 28 June. Find out more at

www.ourneighbourhood.com.au.



Making the best of remaining at home

Senior Helpers Northern Tasmania

Caring In-Home Companions

Our services include...

- Companionship
- Home care
- Meal preparation
- Running errands
- Personal care
- Transport to appointments
- Medication reminders
- Alzheimer's and Dementia Care
- Day surgery support

Senior Helpers Northern Tasmania is part of the National Senior Helpers Body and is the first branch to open in Tasmania. Located in South Launceston, we are employing the best local staff to join our team to be available to seniors and adults with disabilities in your area.

Call us and have a chat to discover what Senior Helpers can do for you or a family member.

Phone: (03) 6344 2556
Email: launceston@seniorhelpers.com.au
Office: 220 Wellington Street, South Launceston 7249
ABN: 5941206849

SENIOR Helpers
Caring In-Home Companions

Launceston City Council wants your feedback.

Your Voice. Your Launceston. is an easy, safe and convenient way for you to contribute your ideas and opinions on key projects being considered by Council.

Your voice matters through surveys, quick polls, submissions and in online discussions.

Registration is required if you want to participate and post your comments in online discussion forums. Your privacy is protected because these online discussion forums are moderated by an independent organisation. [Register Now!](#)

- If you don't want to register and participate in the online forums, that's okay. You can still read about projects the Council is currently consulting on, download key documents and find out more about other ways that you can have input.

Launceston City Council values your involvement, invites you to have your say and encourages you to tell your colleagues, friends and neighbours so they can have their say too. http://yourvoicemyourlaunceston.com.au/register?return_to=%2F

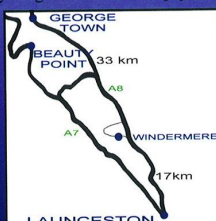


Amble In Cottage

Features of our fully self contained cottage:

- ★ Short 12 min drive from Launceston
- ★ Adjacent to General Store/fully licensed café
- ★ Luxury main bedroom with spa & separate ensuite
- ★ Upstairs loft offering a warm, typically 'Country Inn' style accommodation for 4 guests
- ★ Family dining table for six
- ★ Colonial doors open to a balcony on both sides
- ★ Reverse cycle air conditioning/heating
- ★ Colour TV and DVD player
- ★ Stereo CD/cassette system

Everything is there for an enjoyable stay!



Cnr East Tamar Highway & Windermere Road
Windermere, Tasmania 7252

Bookings

Phone Allison Glatte
63281188 or 0437948415




LIGHTNING BIN HIRE

FOR LIGHTNING QUICK SERVICE!

- Skip Bins
- Clean Up Service - Household Or Garden, We Can Do The Work For You
- 2, 3 & 4 Cubic Metres
- Rubbish Removal
- Servicing Launceston, Dilston, Windermere, Hillwood, Lilydale & Pipers River
- Firewood Supplies

Call 0497 199 141 All Major Credit Cards Welcome
Karoola



DILSTON FIRE BRIGADE

Tasmania Fire Service

The Tasmanian Fire Season...so far!

The weather has cooled off and the fire activity around the state has decreased, however we are still seeing vegetation fires burning in seemingly wet terrain. It is indicative of how dry the summer just passed actually was, and a sobering reminder that fires can start and burn even after periods of rain.

Dilston brigade has been active in recent weeks preparing for the winter months by brushing up on skills that include breathing apparatus use, structural fire-fighting methods and approaches to motor vehicle accidents. Our new members and cadets are getting a good introduction to the requirements of being a Tasmanian Firefighter and have

been showing good promise.

Did you remember to change your smoke detector battery with the change in daylight saving?? It's a good time to do so with smoke detectors being an important measure of alert in your household. Most take a 9 volt battery and are easily changed but if you are having difficulty then the brigade is more than willing to help.

Furthermore the brigade is more than willing to provide fire safety advice for your house and surrounds with particular mention of the growth of plants and grass that typically occurs over the winter months. Keeping this under control now ensures a safer

Brigade Contacts :

Paul Blakie	0417 592 424
Neville Jolly	0417 540 230
Jason Hingston	0407 392 457
Raoul Stow	0417 351 423

environment for the next fire season!!

*Permits are no longer required but it is a good idea to still register any burning off that you wish to do with Firecomm on **1800 000 699**. This prevents unnecessary call outs.*

The brigade recently visited Bell Bay Fire Brigade for them to take a look at our Heavy Tanker. It was received very well and we had to fight to retrieve the keys at the end!!



Late season fire at Craigburn assisting Hillwood Fire Brigade.



Find us on Facebook! www.facebook.com/DilstonFireBrigade



A thankyou sent to the TFS from the combined churches of SE Tasmania as thanks for our efforts. We never expect thanks and gratitude for doing what we do but it is nice when it does come!

Do you use LP Gas for heating or cooking???...

The Tasmania Fire Service was called to a fire involving a gas cylinder leak at an Invermay workshop at approximately 6am on 7th of May.

The cylinder was connected to a heater used to heat the workshop. On arrival the cylinder was found to be leaking through a split hose near the regulator.

The cylinder was cooled from a safe distance until it was deemed safe to approach and isolate the supply.

It was the first time that the heater had been used since the previous winter and had been in storage for this time.

It is a timely reminder to check all gas cylinder hoses, connections and regulators that have not been used for some time as they may have suffered some damage over the summer.



**TASMANIAN
BUSHFIRE
RECOVERY**

If you feel you would like to make a donation to the appeal then then its as easy as typing "Tasmanian Bushfire Recovery" into Google and following the link to the Tasmanian Government website of the same name. There you will find all the information you require.

Hillwood News

The Anzac Day Dawn Service at Hillwood was held at the war memorial next to the fire station where 100 residents gathered to remember the fallen from conflict during Australia's history.

The address was given by former Hillwood resident, ex Wing Commander David Miller, who served in the RAAF from 1951 –1984 as a radio and radar technician. Since retiring, David has

represented the Australian Gov't at war grave ceremonies in Europe and Gallipoli. He is currently living in Canberra where he is heavily involved with the RSL.

The parade was called to order by ex Pvt. Chris Seymour, a former Hillwood resident, who had served in Cambodia in 1991-93 on a peacekeeping mission to protect the Cambodian people from the invading Khmer Rouge.



Ex Pte Chris Seymour lays a flower tribute at the Hillston war memorial.



The Millar clan from Hillwood at the service.

HILLWOOD AREA RESIDENTS AND RATEPAYERS ASSOCIATION CALL FOR MEMBERSHIP



HARRA is an Independent, not for profit association incorporated in 2009. The association seeks to advocate on behalf of the local community in dealing with matters which will have an impact on our district, be it private, local, state or federal government proposals.

The association is not politically aligned and forms a consensus amongst it's diverse membership in reaching it's decisions in the course of developing strategies to further the view of the community. The ultimate objective is to bring the 'Voice of Residents and Ratepayers' to the attention of the respective organisation/s.

HARRA has established links with other ratepayers' associations, and community groups across the region. We are constantly looking to develop that community network within the East Tamar region and the greater Hillwood area.

The Association's committee meets once a month, with ordinary members' meeting once every three months (non members also welcome). To be eligible for membership you must be a resident or a ratepayer within either the post code of TAS 7252, or the Municipality of George Town. Permanent membership fee is a one off \$10. (there is an annual levee of \$5)

If you would like to hear more about what we are doing, or wish to become a member or be an active participant of the committee and association then please get in touch. We look forward to hearing what you have to say, and then doing something about it.

Hillwood Area Residents' and Ratepayers' Association Inc. IA10168

Richard Nicholls (President) HARRA PO Box 249 George Town TAS 7253
harra.inc@bigpond.com | www.harra.asn.au

Follow us on Facebook



Community Advertisements



MORE THAN JUST MOWING

Call your Local Jim for:

- Ride-On Mowing
- Pruning Trees / Shrubs
- Gutters Cleared
- Flue Cleaning
- Rubbish Removal
- Window Cleaning
- Weed Spray

Ask for free Quote

**Jim's
Mowing &
Garden Care**

ph **131 546**
131 JIM

jimsmowing.net



Rebecca Evans Equine

Equine Therapy & Riding Coach

- Qualified Equine Muscle Therapist and NCAS Coach
- Remedial and maintenance equine muscle therapy
- Riding lessons

'Holistic solutions for you and your horse'

S.A.E.N.A Member, B.Sci, Cert. EMT, NCAS Coach.

Mob: 0407 736 007

Peter Gutteridge

**BUILDING &
MAINTENANCE**

**Bathroom and Kitchen
Renovations,
Decks, Pergolas,
Painting, Paving,
Tiling and General
Maintenance**

0448990314
63281391

EILANDER CONTRACTING

0438141807

w_eilander@hotmail.com
A.B.N 96893128364



Qualified Builder

**Building
Carpentry
Tiling
Extensions
Landscaping
Renovating
Demolition and more**

I'm reliable and provide quality work at a good price.
Willing to do those jobs no one will do for you.

-Please call or email Wayne Eilander for a free quotation-

 www.facebook.com/EilanderContracting

David Stebbeings

Solar Installations Tas

*Installer of Clean Energy Council
accredited solar*

**Maintenance or addition to existing
systems**

Free Quotes

Locally owned business

Talk to the installer, not a salesperson

Call David NOW **0400 561072**



Willdig Excavations Pty Ltd

Specialising in:

- Earthworks, house sites, small dams
- New driveways and upgrading of existing
- Installation of pipe lines
- Rock landscaping
- Gravel and rock supply at very competitive rates
- Tree removal and land clearing

Obligation free quotes

Willdig Excavations operates its own quarry on the East Tamar

Contact: Will Archer 0427 971 988 or Email: will@landfall.com.au

Birds of the Tamar.... The Grey Gosshawk by Jon Hosford

This bold and persistent hunter has recently been seen in the district by residents walking Windermere Rd.

Goshawks usually prey on small birds and mammals up to the size of a rabbit, reptiles, grasshoppers, cicadas, beetles and other insects. The female bird is the bigger of the two and can take bigger prey.

There are two colour phases of Grey Goshawks in Australia, one pure white, the other grey-backed. Tasmania's birds are predominantly white. The two phases do interbreed.

Pairing seems to be permanent , and both male and female build the nest, often using the same structure in successive seasons. Repairs may spread over several months. The female undertakes the most of the incubation and brooding, but her mate will relieve her for an hour or so each morning while she feeds. He also assists in bringing fresh leaves to line the nest. After young hatch, he does all or most of the hunting for the brood, bringing food which the female tears up with her bill, and passes on to the young.



HARDWOOD FENCING

Still the strongest & most durable timber.

See us for DIY or Free quotes to build.



Barbers Sawmill

63340902

Dowling St, Launceston (behind Boral Shed)

Mon – Fri 8-4.30pm

Pick up or delivery

Community Garage Sale

There has been some interest in holding a **Community Garage Sale**

on

15th September, election day.

If you would like to take part could you please ring

63281348

Need to Relax? Try Tai Chi

New Tai Chi Classes for Beginners

Thursdays 9:30am – 10:30 am

Dilston Hall

Cost \$6

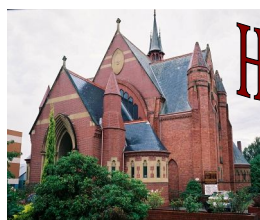
If you are interested in an intermediate level or evening class please contact me and if there is enough interest I will run additional classes.

Just come along or contact Grant

on 6334-8550, 0418 606



ST MATTHIAS
WINDERMERE



HOLY TRINITY
LAUNCESTON

THE RESTORATION OF ST MATTHIAS' CHURCH

When one wanders through the graveyard of St Matthias' Church, then enters the Church itself, one of the first things that hits you is the age of the building and all of the previous parishioners and members of the local community who kept the church safe and contributed in one way or another to the upkeep of this church. It is a place of worship to some but to all of us it is a very important part of our community. St Matthias is a very significant icon in Northern Tasmania that draws people to it who would like to paint, draw or photograph it—or just wander peacefully through the grounds. I have discovered that quite a large amount of people come out from Launceston to enjoy the peaceful surrounds and views by sharing a picnic lunch on the riverbank or, sometimes next to one of their ancestors buried there; sometimes in remembrance of their birthday.

We have, as a community, over the last five or six years replaced the roof which was in a terrible condition, and also replaced the leaking and rotten interior of the Bell Tower with new timbers. Thanks to generous Conservation Appeal donations we were able to commission a comprehensive Conservation Management Plan which has provided us with a wealth of knowledge of the history of the church and graveyard including some of the projects which the previous parishioners had but were unable to carry out.

The riverbank has mostly been cleared back to what we have seen from early paintings and photographs and the riverbank will be planted with suitable plants in Spring for stabilisation of the bank and to preserve the paths leading from the jetty to the Church. What is especially exciting is the Heritage 'Cartage Track' which is clearly visible now. This historical track at one stage ran right along the river's edge for kilometres and was frequently used by settlers on the East Tamar walking to Church Services and also by various producers along the river taking their produce to be picked up at the jetty by a ship bound for Launceston or the mainland.

Plans for the Future:

- Restoration of the wooden surrounds of the Wing gravesite which is in progress (funds donated by a descendent)
- We have finally been able to determine the cause of the extensive cracking of interior walls (due to trusses in roof not having ties, therefore putting pressure on the walls). We will need to install 'ties' in the trusses to stabilise the roof
- For security purposes the installation of lights for protection of the graveyard and church from vandals
- The bagging and painting of the Columbarium Wall to make it blend more with the church building itself for esthetical reasons
- Restoration of 2 windows of St Matthias which are at the moment deemed a 'public safety risk'

Please contact either Sue Speed (6328 1209) or Jon Hosford (6328 1163)

if you would like to make a tax free donation to the Conservation Appeal.

ST MATTHIAS' SERVICES

Sunday 9 June

10:30 am Eucharist Service

Sunday 23 June

10:30 am Eucharist Service

Sunday 14 July

10:30 am Eucharist Service

HOLY TRINITY SERVICES

Each Sunday:

8:30 am Eucharist Service

10:30 am Sung Eucharist

(1st Sunday) **5:30 pm Choral Evensong**

(2nd Sunday) **5:30 pm—Growing in Faith
Together**

(3rd Sunday) **5:30 pm—Taize Service**

(4th Sunday) **5:30 pm**

Prayer at the end of the day

(5th Sunday) **5:30 pm No Service**

*For information on Weekly Eucharists check out the website
holyltrinitylaunceston.org*