



# Smoke Signals

## East Tamar Newsletter

[www.winderdoon.com/community/smokesignals.htm](http://www.winderdoon.com/community/smokesignals.htm)

### Our Early History

by John Coulson, whose great great grandfather was the early settler who named DILSTON

*Local resident, John Coulson begins a recount of the settlement of Dilston in the early 1800s.*

*Smokesignals will publish summaries of this along with photos over the next several editions.*

The early 1800s were times of convict transportation and by 1846, over 30,000 had been sent to Tasmania to offset the overpopulation of England and achieve a certain ethnic cleansing by exporting those convicted of offences. There were regular reports in the papers about ship arrivals, e.g. The Princess Charlotte made regular visits and one report read *"This morning the prisoners were landed in an orderly and healthy condition, after which they were inspected by His Honour the Lieutenant Governor, and assigned to their several employments"*.

Convicts were usually assigned to work for private employers, who provided shelter, clothing, and food according to government regulation. If well behaved after 2 years, they became eligible for a ticket-of-leave, and later a conditional pardon. However convicts were not as disciplined as colonists expected, so bushranging, subdued under Arthur, became a much greater threat. Then, in the 1840s Van Diemen's Land experienced an economic depression and the large numbers of convicts on release and the increasing numbers of free

immigrants found work scarce. Large numbers of people, not just convicts, therefore, were in financial need and were forced to steal to survive.

Transportation ceased in 1853.

The Coulson family tree can boast of convict ancestry, not on my father's side but my maternal great grandfather was transported here because he stole a mare in Norfolk, England. These days we accept this ancestry and even take pride in it, but my late mother refused to believe her grandfather was a convict.

Life in Van Diemens Land in the early 1800s was challenging. Achieving a land grant was the first step, but convict labour was needed for building and other development. Transportation was difficult by land, so most travel in this area was by ship on the Tamar. Lack of communication with the Tasmanian Aborigines meant relations with them had broken down, so settlers were fearful of being slaughtered. Add to that the ever threat of attack by bushrangers and you can sense the challenge these early settlers faced.

*More next edition.*

*Thank you John for sharing this with us.....ED*

Issue 203

June 2016

### Inside this issue

Book Club	Page 2
Gardening	Page 3
Church News	Page 4
Community Centre	Page 5
Get Connected	Page 6
Fire Brigade	Page 7-8
Hillwood News	Page 10
Business	Page 11-12

## Windermere Corner Café

6328 1335

**Please note our changed hours**

Mon- Tues, Thurs 8:00—5:00pm

Wed 10am-3:00pm

Fri—TGIF as usual

A range of Tasmanian wines, beers  
& spirits are available

Sat-9:00—4:00pm

Sun-9:00-4pm

All your basic essentials .

Licensed to sell Tasmanian produced and  
owned alcohol.

**Try our Take Home Meals**

## Book Club

*Trixie Gillard*

### ANOTHER COMMUNITY SUCCESS STORY:

### BOOK CLUB CELEBRATES 30 YEARS

Windermere, Dilston and Swan Bay book lovers having been enjoying one another's company once a month for the last thirty years. Currently meetings are held on the second Wednesday of every month at members' homes, commencing at 7.30pm.

Originally founded as the Swan Bay Book Group, it used to source books through the State Library/LINC's Book Discussion Service. Nowadays members are more independent-minded, with the member hosting their month choosing the topic and title; usually it's a book that's up for discussion, but occasionally it will be the combination of a book and its movie, or even a book that prompts serving 'destination' refreshments.

The topics are wide-ranging too – from popular fiction to historical fiction, biographies, autobiographies, crime fiction, and social issues. The main aim is enjoyment and broadening of the mind – to read authors and explore topics that are sometimes outside of one's usual reading repertoire.

Books we have particularly enjoyed this year have included – *All The Light We Cannot See*, by Anthony Doerr (also on

President Obama's summer reading list), and *The Tiger's Wife* by Tea Obreht.

A memorable evening was an unusual book/movie combination when we discussed Harper Lee's recently published book *Go Set a Watchman*, followed by the movie *To Kill a Mocking Bird*. All agreed *To Kill a Mocking Bird* was the superior story.

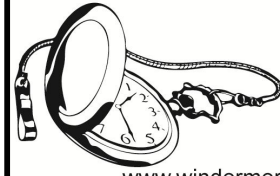
Ten Days on the Island inspired us to choose islands as a topic, with each member choosing a different book or aspect of the island in question. Our Icelandic evening was very interesting, if not a little chilling, as it explored Australian author Hannah Kent's accomplished first novel *Burial Rites* which re-imagines the life and death of Agnes Magnúsdóttir, the last woman to be executed in Iceland.

For our evening on Malta we included an exploration of Maltese cooking, with each member bringing a plate of Maltese dips and finger food. Usually, though, we simply have a glass of wine over our discussion, and finish up the evening with tea and coffee and either biscuits or cake.

To celebrate our 30<sup>th</sup> anniversary in October we are inviting booklovers who are interested in joining our Book Club to join us for a special get-together on Wednesday October 12 at 7.30 pm. Numbers are limited, and we ask those who come, and would like to join our book discussion group, to understand that as members they would be expected to host an evening in

## Windermere Watches

Service and Repairs to all  
Wristwatches and Pocket Watches  
Watches bought and sold



Jeff Wynne  
0417 843 943  
or 6328 1544

[www.windermerewatches.com.au](http://www.windermerewatches.com.au)

## Signal Station Tavern

**Bar, Lounge** competitive prices

Our dining facilities are currently being  
upgraded.

Open again in March.

Current bar hours 'Mon-Thurs 1-9pm

Fri-Sat 11am-10

Sun 11am-9pm

Sunday Pizzas 1-7:30pm

**PHONE 6394 8228**



CALTEX

Caltex  
Mount

Direction

**Open 7 days per week– 6am to  
7pm weekdays**

**8am to 7pm Saturday, 8am to  
6pm Sunday**

Full grocery lines– fish  
bait/gear– BBQ gas

VARIETY OF TAKEAWAYS &  
HOT DRINKS

**PHONE ORDERS**

**6394 8364**

due course.

Contact Trixie Gillard on 6328  
1381 or email  
[flahulac@bigpond.com](mailto:flahulac@bigpond.com)

# Gardening Notes & News

## Pruning Fruit Trees

Winter is the best time to prune deciduous fruit trees such as apples, pears and plums. These trees will fruit well whether or not they are pruned. But if the trees grow too tall the fruit is high and hard to reach, and when there is unproductive wood, they don't tend to crop reliably. The aim of pruning fruit trees in the home garden is to assist the tree to produce reliable quality crops, with good size fruit on a manageable sized tree.

The shoot on the end of each tip is called a terminal and this won't ever fruit, so reduce that to just five or six buds. There's also a branch that comes off the side of the shoot at an angle of between 30 and 60 degrees and that's called a lateral. Leave the laterals intact because they will develop fruiting spurs for next season. And the little stubby bits of growth, which are fruiting spurs, will develop apples this season. Try to prune a quarter of an inch past a bud and at an angle, so the rain will not accumulate and create rot. Paint large cuts with pruning paint such as Steri-Prune obtainable at your nursery.

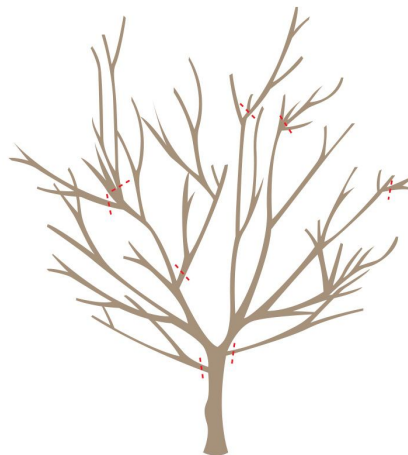
Pears fruit on the little flowering spurs, just like apples, but they also fruit on the tip of one year old laterals, and so when pruning reduce the terminal and leave these to produce fruit for next year.

When pruning plums it is important to train the tree into a vase shape. This means opening

up the centre of the tree to let in the light. Look for six to nine nice, strong branches that can form that framework. When working with a Japanese plum look to see what interferes with the shape of the tree. The next priority is to reduce any tall, whippy growth. Plums fruit on fruiting spurs and one year old laterals, so it's important to remove any old or dead wood that's cluttering the tree to encourage new growth. The ideal is to end up with a strong terminal with lovely fruiting spurs ready for this season's plums.

Good orchard hygiene is also important so after finishing collect the prunings, and dispose of them. Remove any old, rotten fruit because these could harbour disease.

**Codling Moth** in apples and pears can be controlled by spraying with Dipel, an organic bacterial spray, every 10 days during the formation of apples.



Showing the pruning cuts for a fruit tree removing wood that is inward facing and low growing to ensure the formation of fruit is not too crowded.

## Dietitian

Stephen Hodgkinson: APD, BHlthSc, MND  
Summerdale Medical Centre  
Home visits upon request  
Ring now to make an appointment  
P: 0419 838 674

E: [stephen.h.nutrition@gmail.com](mailto:stephen.h.nutrition@gmail.com)



Some of the areas I can assist with are:

- ❖ Diabetes – Type 1 & 2, Gestational
- ❖ Digestive Health – IBS, Coeliac, Diverticular
- ❖ Cardiovascular – Hypertension, High cholesterol
- ❖ Weight Management – loss/gain and support
- ❖ Gastric banding – Pre & Post op
- ❖ Vegetarian & Vegan Diets
- ❖ General Healthy Eating & Nutrition advice

Mention this add for a 20% discount



## Garden Club News...

Ros Ryan

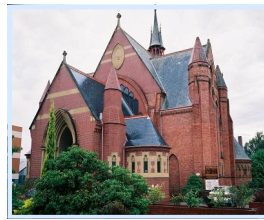
We came together for a Picnic at Hollybank Reserve in April. A group of 13 enjoyed each other's company and shared our food with an abundance of Wasps. We have all come away informed on their habits. Protein when they are getting ready for winter and sugar when feeding young. I must say it was pretty much the topic of conversation for the day. We fed them, watched them, photographed them. We must remember to take spray when and if we return to Hollybank. Our next meeting will be at Evelyn Tuba's house in August.



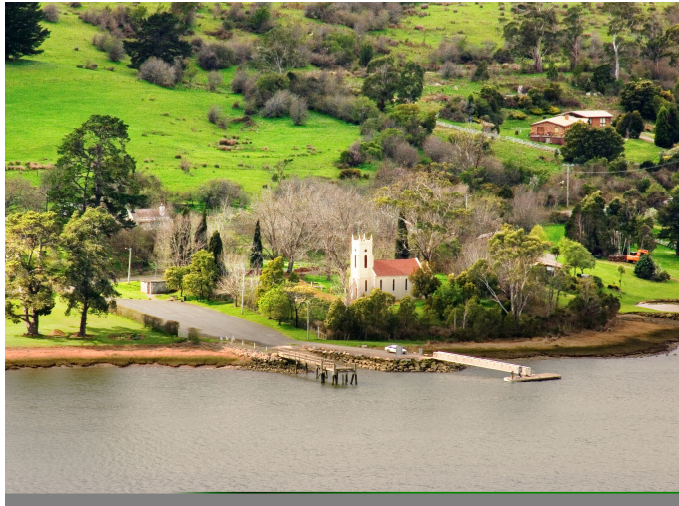
Garden Club members at Hollybank.



# ST MATTHIAS WINDERMERE



# HOLY TRINITY LAUNCESTON



leadlight windows conservation appeal.

**Sunday, 5th June, 2016** from 12.00 noon till 3.00 pm. Come and view an Arts and Crafts show and enjoy a recital by the Launceston Clarinet Choir.

There will be a silent auction for a painting by Launceston artist Ben Miller.

Tasmanian food and beverages available to purchase.

Tickets \$5.00 at the door.

This event is a fundraiser for the stained glass

**On Friday, 17th June**, Mel Reeves will have a display of her jewellery "*Birdie Buttons*" and Tupperware items at TGIF at the Windermere Corner Café. A donation from sales will assist the Conservation Appeal.

## ST MATTHIAS' SERVICES

### Sunday 12th June

10:30 am Eucharist Service

### Sunday 26th June

10:30 am Eucharist Service at Holy Trinity  
note, no 10.30 am Eucharist on this day at St. Matthias due to Fr. Warwick's final service taking place at Holy Trinity Church.

### Sunday 10th July

10:30 am Eucharist Service

## HOLY TRINITY SERVICES

Each Sunday:

**8:30 am Eucharist Service**

**10:30 am Sung Eucharist**

**5:30 pm Choral Evensong** (1st Sunday)

**Growing in Faith Together** (2nd Sunday)

**Taize Service** (3rd Sunday)

**Prayer at the end of the day**

(4th Sunday) *For information on Weekly Eucharists*

*Go to Holy Trinity's website*

*[holytrinitylaunceston.org](http://holytrinitylaunceston.org)*

*We encourage the community to  
enjoy the church grounds.*





## Dilston Fire Brigade



### Tasmania Fire Service

#### Home Fire Safety and YOU!

Last issue we touched on Smoke Alarms and the importance they play in home fire safety particularly as the temperatures drop, and our reliance on the various forms of heating increases.

This issue we take a look at Home Fire Escape plans. We have provided over leaf a handy fact sheet produced by the Tasmania Fire Service. Our own homes can become places of unfamiliarity when full of smoke so an escape plan is a good way of ensuring preparedness in case of such an eventuality.

Further information can always be found on the Tasmania Fire Service website, [www.fire.tas.gov.au](http://www.fire.tas.gov.au), and using the link to Home Fire Safety found on the left hand side.

#### Gutters and Leaves...

Just a quick note to all to ensure your roof gutters are clear, given the season of falling leaves. Why might we be mentioning this you might

ask, given it is normally something we mention in the lead up to summer? Well, blocked gutters and drains pose a flooding risk to your household and we are sharing this message across from our colleagues at the State Emergency Service, the primary agency for this sort of emergency.

Did you know that in times of high need of SES resources, the TFS have an agreement where you may see a fire truck role up to an SES type incident such as leaking roofs and fallen trees. Dilston Fire Brigade have been involved in a number of these type of call outs over the years.

#### Bushfire Mitigation Planning

We had a good community response to the Strategic Bushfire Mitigation Planning (Tippogoree Hills South) session held at the Dilston Fire Station on Sunday May 15th. Community members engaged positively with brigade members, and

representatives from the TFS Fuel Reduction Unit. For more information visit our facebook page for an information flyer covering the area being assessed.



[www.facebook.com/DilstonFireBrigade](http://www.facebook.com/DilstonFireBrigade)  
[www.facebook.com/TasmaniaFireService](http://www.facebook.com/TasmaniaFireService)

#### Brigade Contacts

Paul Blakie	0417 592 424
Neville Jolly	0417 540 230
Jason Hingston	0439 771 156
Raoul Stow	0417 351 423



# Home Fire Safety

## FACT SHEET

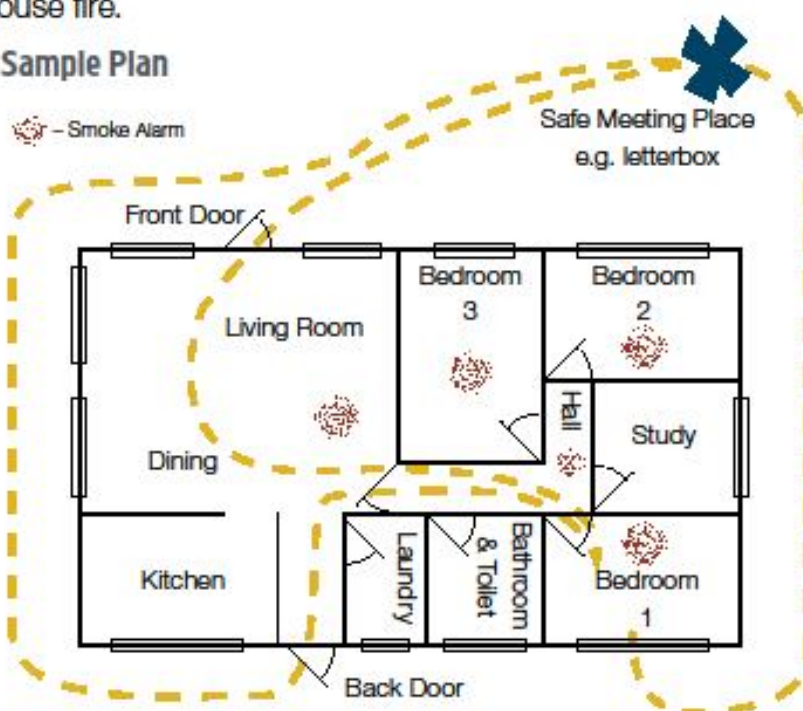
## Home fire escape plan

### Possibly the most important plan you'll ever make.

Design your home fire escape plan to suit your home and talk about it with everybody in the house. If a child has been involved in planning and practising an escape plan they are more likely to get out alive in a house fire.

- Make a **home fire escape plan** and **practice** at least twice a year.
- **Crawl low** if caught in smoke.
- **Use windows** as an alternative means of escape if safe to do so.
- **Cover** broken glass with a blanket or doona.
- **Once out, stay out** at a safe meeting place outside your home (e.g. next to your letterbox).

Sample Plan



The best fire escape plan is worthless if your escape route is blocked. While deadlocks and security grilles may deter intruders, they can be deadly in a fire. When you are in the house:

- **Leave keys** in any deadlock, or on a hook (preferably attached to a chain) close to the door or window, and out of reach of intruders.
- **Make sure** that window security grilles and screens open **readily** from the inside.
- **Make sure** that all windows and doors **open easily** for all members of your family.
- If you have **visitors** staying over for the first time, show them your escape plan so they **know what to do** in a fire emergency. Make sure they know where your Safe Meeting Place is located.







COMMUNITY  
WORKS

## Community Centre News



### Christmas in July

Planning is underway for a Xmas in July celebration on Saturday July 16th at The Dilston Community Centre. Catering will be undertaken by the Men's Shed and their wives.

A three course meal with some drinks will be served for a maximum of 40 people.

To reserve a table of 6 or to book for couples @ \$45 per person, phone Tim Anderson

**Phone: 0407 433 885**

### Welding

**ETMS** was successful

in an application for a Tasmanian Government Grant under Round 3 of The Tasmanian Men's Shed Association. Part of the equipment purchased was a MIG welder. The welder has already been put to good use in a commissioned project for The Examiner Office.

It is intended to conduct welding sessions for members who would

like to learn, so this may be a good reason to consider joining The Shed.

### Wood Turning

A wood turning lathe donated by Brian Ralph has been recently put to good use with the addition of a set of turning tools.

Members are starting to produce pieces for personal use and hope to have items for sale for Christmas present purchase.

### AgFest

Several members assisted with the set up and the catering at AgFest with The Rotary Club of West Launceston in early June. The SHED will benefit from this by a donation from Rotary profits.

### Rally round the saw boys

Joe Mennen is well known by members of The East Tamar. Joe is always ready to help out on projects for the community such as his construction of Kangaroo nurturing pouches, and his rendering of the St Matthias Columbarium. Joe has been

busy over the past 9 months leading the construction of Early Learning block kits for Child Care Centres around Northern Tasmania.

When Joe's health threatened a bleak winter this year, the guys from **TGIF** decided he should have a wood supply for the winter.

Ten of them turned up one Sunday morning to organise a load of wood that would ensure his winter would be warm.

Naturally Joe was totally surprised and overwhelmed when the wood turned up at his house.

**Community does work Joe!**

**We wish you a speedy recovery.**



Tasmanian  
Government



Newsletter printed by courtesy of

Your local

Liberal member—standing up for Bass

# Michael Ferguson MP

Web: [www.michaelferguson.com](http://www.michaelferguson.com)

Email: [michael.ferguson@dpac.tas.gov.au](mailto:michael.ferguson@dpac.tas.gov.au)

Mail: PO Box 537, Launceston 7250

Phone: 6777 1032

## Supporting Northern Tasmania

Authorised by M. Ferguson, 53 St John Street, Launceston 7250



## Get Connected NBN News ....A Letter from The Minister for Communications to Dilston resident, John Coulson.

Get Connected is happy to receive comments and letters which they will pass onto The Minister.

Email: [flahulac@bigpond.com](mailto:flahulac@bigpond.com)

### ***Mr John Coulson of 73 Nelson Drive, Dilston, Tasmania 7252***

As the NBN has yet to reach Mr Coulson's location, I cannot be certain about which technology he is likely to receive. Once his address is included in the rollout plan, he will know which technology will be used to serve his premises. However, given Dilston's location, it is probable that the community will be served either by an extension of the fixed wireless network or the NBN Long Term Satellite Service (LTSS).

The LTSS will become operational in mid-2016 following the deployment of two Ka-Band satellites. The first of these satellites was rocket-launched on 1 October 2015 from the Guiana Space Centre in Kourou, French Guiana. Weighing some 6,400kg, and dubbed 'Sky Muster', the satellite is currently undergoing in-orbit testing to ensure correct functioning. The craft is one of the world's largest communications satellites and is capable of delivering wholesale speeds of up to 25/5 megabits per second (Mbps) to its retail service provider (RSP) customers.

The two LTSS satellites will provide unprecedented coverage and capacity, having 135 Gigabits per second (Gbps) of total capacity compared with just 4 Gbps on the current Interim Satellite Service. The launch is a huge step forward for those living in regional and remote Australia. The heavily subsidised service includes free equipment installation (except for those premises that cannot reasonably be accessed by road and would require some air or water transportation component), subsidised monthly charges and network maintenance.

The satellites will cover the entire Australian mainland and islands through 101 dedicated 'spot beams'. Each satellite beam has a different capacity in terms of maximum bandwidth, which is split across all end users in the beam, and cannot be changed. The highest capacity beam can serve approximately 15,000 premises, while the least 20 lowest-capacity beams can serve an average of 700 premises each. An addressable location, that is a residential or work location such as a small business, is eligible for a single service.

The second LTSS satellite, which will be launched later in 2016, will provide the capacity to support the expected demand, as well as a level of network robustness and redundancy as NBN Co migrates users to the LTSS. While the LTSS is planned to be available to more than 400,000 premises, it is expected around 250,000 homes and businesses will take up the service via their RSP. Dependent on the location, NBN Co aims to have services installed within 20-35 business days from accepting order from the RSP. During the migration period, NBN Co plans to support demand for both new and migrating services at approximately 10,000 migrations per month.

In addition, through an innovative process of network optimisation NBN Co has been able to provide better than expected high capacity wholesale plans. Part of NBN Co's strategy to increase available capacity is to move 40,000 premises to the fixed line and fixed wireless footprint as well as using any unallocated capacity available on the second satellite.



## Landcare

### NRM Field day at Swan Bay

Saturday May 14 saw 30+ people gather on the property of Josh and Wendy Cocker in active discussion on the subjects of landscape management, tree decline and climate change. Ms Alison Hugo of NRM North once again provided excellent leadership with discussion contributions from Anna Povey and Dr Tanya Bailey.

The obvious regional impact of climate change as manifest in the dramatic and widespread death of "White or Manna gum", *Euc. viminalis*, featured as paramount. This however led to 'what to replace these trees with?' That is where it became interesting. Those birds and insects which rely on the above species are seen as having value in the environment and accordingly replacement tree species which may accommodate all or some of those reliant species are suggested. Everybody welcomes the song of the pardalote when they arrive in Spring, we would not want our children to be deprived of that joy. Thus the question of replacement trees explored how to identify species which fit a similar environmental niche and how to identify *viminalis* individuals or clumps which have the genetics to survive the climate challenge, several local examples emerged from discussion of trees which seem to be more resilient. A second stream of thought focused on replacement species and again some options emerged from the discussion and a short walk on the Cocker's property.

What next looks exciting! The active discussion brought out many useful observations and experiences and led to a proposal to define a protocol for collation of observations in a "community science" approach. This proposal will be developed, **so watch this space.**

In the meantime this is the time for planting trees. A mix of species including plants which provide an understory, a mid-canopy and a dominant canopy should be included. Species which may offer commercial value will add greater value. The site should be well prepared and the plants given care for at least the subsequent two years. Only plan for and plant as much as you can give thorough preparation and post planting care. Losses as high as 25 – 30% were quoted, this should not be so. You are not even half way when you plant a tree, it is only a baby and needs a mother's care. Get good advice if your experience is limited.

Commercial aspects were discussed and observed. Trees grow into value and on the way add value. Hedge rows do have a role in the landscape but generally blocks of trees are preferred. The ideal environment is a forest meadow, that is where our commercial food plants maximise yield and quality, that is where

animals thrive and that is where humans find the most comfort. Trees capture carbon during growth & this too has value. Tree growth terminates in end use. What may be a use which will retain that carbon in a stable form? The choice of species which have value for furniture may offer the greatest value, however any organic material including tree residue may be turned into char which will then enrich the soil. There are several simple technologies for creating char. The open back-yard burning heap is a waste of resource and opportunity.

It was certainly encouraging to share those observations with a goodly group people, and one anticipates some pretty exciting outcomes.

Watch out for future land-care events in the region.

*Ian R Farquhar*



*As a local resident of Swan Bay for the past 7 years, Justin absolutely loves the East Tamar Region! With a history of recent property sales ranging from Dilston to Swan Bay to Mount Direction to George Town, you can rely on Justin's real estate expertise and be rest assured that he has the local area knowledge and contacts to get your property sold at the best price in today's market and within a respectable time frame.*

*If you are considering selling or would like a market appraisal to give you an idea of an expected sales price, give Justin a call today! He would be delighted to assist you with any of your real estate needs.*

**Justin Goebel**  
Property Consultant  
**0458 435 062**  
[justin@bushby.com.au](mailto:justin@bushby.com.au)

Justin Goebel - Bushby Property Group

[www.bushby.com.au/staff/justin-goebel](http://www.bushby.com.au/staff/justin-goebel)

**B Bushby**  
PROPERTY GROUP

117 Clifftiere Street, Launceston, TAS 6333 3600



## Hillwood News...Nancy Donnelly

**SAD NEWS:** We were sorry to read of the death of former long-time resident Len Price in April – not long after he left Hillwood to retire in Riverside.

### ANZAC DAY CELEBRATION 2016

This year, the third year for Hillwood Progress Association, is probably our best. Even the weather was reasonable.

The speaker at the Dawn Service was Audra Brearley – I am informed she spoke well of her trip to Gallipoli. Audra is a relation of Private Cossom whose plaque is one of the three on the Memorial Wall for World War One.

Audra also supplied a screen presentation of her trip together with a photographic display. Other memorabilia was on display and of course, Dorian Airey's hat which he made in honour of his grandfather, Bob Airey. A military vehicle greeted us as we entered the Hall.

The Launceston Men's Choir entertained guests as they arrived at the Hall for breakfast – singing

old-time War songs – arranged by John Baily – a most enjoyable welcome.

We welcomed some new young ladies who helped with preparation and serving of the breakfast apart from the usual legion of wonderful helpers who help set up, or stand in the cold outside the kitchen door to cook the sausages and bacon, obtain donations for the auction and raffle and sell the tickets and run the auction. This year, I commend Kathryn Nicholls. Kathryn leads a very busy life but she works extremely hard for our Anzac Day Breakfast. She has everything well organised and that it is why it runs smoothly. The behind the scenes stuff that other don't see – it takes more than an hour to do the final tidying up and stacking her car with borrowed equipment some of which has to be delivered to those who loaned it to us.

Over \$600 was raised for next year's breakfast and around \$500 from the auction and raffle from which this year's donation

will go to Mates for Mates and our Community Fund.

**COMMUNITY FUNDRAISERS:** In Hillwood, we have lovely people who are prepared to raise money for good causes. In our April edition I told you about Mandy Monaghan who raised money for Leukaemia. This time our story is about Annette Bain who helped raise money in various ways including a teal ribbon board at the local Coffee Shop where a ribbon could be purchased for a gold coin and tied onto a board which raised over \$1,000. The total raised by Annette and her daughter Caroline Brown of George Town was well over \$3,000.

**FOOTBALL:** Most Mini-League games are played at Beaconsfield but it has become a tradition whereby, when Hillwood and Bridgenorth play one another, the game is played at their home grounds. On Saturday May 14<sup>th</sup> Hillwood was the host team and our young ones were the winners. After the game, Hillwood hosted a hearty and delicious breakfast for both teams to share, which is a part of the tradition.

### INTERSECTION OF HILLWOOD JETTY ROAD AND LEAM ROAD:

A new plan for this intersection is being presented at the next meeting of the Hillwood Progress Association to be held on Monday 6<sup>th</sup> June. As our Newsletter is usually out a little later than that, more about this in our next Newsletter.



Dorian Airey's carved slouch hat features at the Hillwood War Memorial for the Dawn Service.



## Community Advertisements

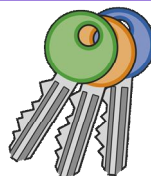
### Peter Gutteridge

#### BUILDING & MAINTENANCE

**Bathroom and Kitchen  
Renovations,  
Decks, Pergolas,  
Painting, Paving,  
Tiling and General  
Maintenance**

**0448990314  
63281391**

### Tas Lock and Key (George Dearing)



**Has moved to Newnham Court.  
77 George Town Road**  
Keys, Locks, advice, callouts to  
East Tamar.

**63262200**

### DID YOU KNOW? Planning a function

Dilston Hall hires out tables  
& chairs

for community use  
at a very minimal fee  
For further details contact  
Pat Hollier 63281348



0419 501 819

**Martin's Mowing  
and Maintenance**  
*Employ a Local*

*Ride-on Mowing  
Brushcutting  
Gardening  
Rubbish Removal  
Chainsaw Work  
General Maintenance etc.*

**Friendly & Reliable**



### WINDERMERE CABINS

302 Windermere  
Road

**Phone: 03 6328  
1666**

**Mob: 0419 022 236**

- 10% discount to all local residents
- Two 2 bedroom log cabins
- Self-contained and sleeps 4
- Private balcony and free gas BBQ
- Guest laundry, chook pen, vegie garden.
- 20% off for 4+ consecutive nights
- Free Wi-Fi
- Pet Friendly

**Email:**

[admin@windermerecabins.com.au](mailto:admin@windermerecabins.com.au)  
[www.facebook.com/WindermereCabins](http://www.facebook.com/WindermereCabins)



### JCS Garden & Property Maintenance Services

From front gate to backyard and all things inbetween

Call Jamie on 0458 515 386

*E: [jamieandmel@hotmail.com.au](mailto:jamieandmel@hotmail.com.au)*

*Lawn Mowing ( Push & Ride on )*

*Pruning & Weeding*

*Garden Clearance*

*General Handyman Jobs*

## Fletcher & Co. nursery

Fletcher & Co. Nursery (formerly Garden View Nursery) has reopened. Plants sold direct to public at wholesale prices.

**75mm pots-\$2.50**

**125mm pots \$5.50**

**140mm pots (trees)-\$7.50**

**543 John Lees Drive, Dilston**

**Open Saturdays & Sundays  
10am-4pm**

### THIS SPACE

will cost you \$68 for the year if  
you advertise with us. Local  
businesses are encouraged to  
enquire.

0419317808

All Smokesignals advertising  
supports community projects.

### Broady's Bobcat and Truck Hire 0427 833 090

**Email: [rgbroad@bigpond.net.au](mailto:rgbroad@bigpond.net.au)**

- Skid Steer Bobcat
- 4.7t Excavator
- 8t Tip Truck
- Post Hole Diggers
- Forks
- Spreader Bar
- Rock Breaker
- Rock Grab

**Located in Windermere.  
Willing to travel.**





## Towns Shearing Real Estate

You have probably heard agents say that winter is a good time to sell and you may have been sceptical. People prefer to sell in the spring months due to pretty gardens and generally more buyers are looking at these times.

If you consider to sell in winter, there are generally fewer homes to compete with and if you have less competition, you can often achieve a better price.

So, if you would like an appraisal of your home please give me a call and we can have a chat about it.

### What others are saying about Sharon...

"Very friendly and helpful all the way. We felt we were kept in the loop through the entire process and were very grateful for the help and advice given to us. A very positive experience and we are very happy with the outcome." Ben and Kaytlenn Margison

"Simon and I cannot praise Sharon Fahey enough, her expert knowledge and friendly approach put us at ease. Sharon worked so hard to sell our property and did so very quickly and at a great price. We have no hesitation in recommending Sharon to anyone. We will definitely call Sharon first when we need her assistance again. We are very happy with the outcome." Simon and Janelle Hill

"Thank you Sharon. As a young couple leaving the state and our biggest investment behind, it has been a daunting time. The service we received was exceptional. Sharon kept us up to date via phone, email and text with prompt timing. We highly recommend her as a sales consultant." Jodie and Nathan Semmler

**Call Sharon Fahey 0409188249**

Elders Towns Shearing 58 Elizabeth Street Launceston Tas 7250



Copy For NEXT ISSUE Due

Friday August 26th

For publication in the 2nd week of  
April

**Email address:**

**smokesignals@bigpond.com**

**Or mail to:**

**454 Windermere Rd. Windermere 7252**

**WOULD YOU LIKE TO ADVERTISE  
IN SMOKE SIGNALS?**

1/6 Page \$17.00

Book an ad in four issues and save:

1/6 Page \$51.00

1/12 Page \$27.00

Small Classifieds, Wanted to sell, etc  
**\$5 (one insertion)**

*Community Notices and Fund Raising  
Notices are Free !!*

Advertisements must be accompanied by  
full name, address and should state the  
number of editions that it is to appear in.

Email advertising copy to

smokesignals@bigpond.com

Smokesignals on the web

<http://www.winderdoon.com/community/smokesignals.htm>

**Lifeline Samaritans**

Would it help you to find a  
listening ear ???

You can, by contacting

**Lifeline Samaritans**

Tele: (03) 6331 1355 or

1 300 364 566

*remember*  
**Mental health**  
**BEGINS WITH Me**

### Community Contacts - **FIRE:000**

Dilston Hall: 6328 1348  
St. Matthias Church: 6328 1209  
Playgroup: 0407 993 616

Garden Club: 63281566  
Book Discussion Group: 6328 1231  
Bird Watching: 6328 1163

Native Animal Rescue

*Lorraine De Wey* 63263502

Men's Shed 6328 1544

Justice of The Peace

Darren Pullen 0439 912 862

#### FIRE BRIGADE OFFICERS

Paul Blakie Mob 0417592424

Neville Jolly Mob 0417 540230

Jason Hingston Mob 0439 771 156

Raoul Stow Mob 0417351423