



Smoke Signals

Your Free Community Newsletter

**SNAKE
BITE
INFORMATION**



Issue 260

www.smokesignalscn.wordpress.com

December 2025



*Merry Christmas
From all the Smoke Signals Team*



*Don't
Forget*

*Community Carols
See Page 7 for Details*



EDGE LANE PROPOSAL FOR WINDERMERE RD.

In recent discussions around community safety, a proposal has emerged for Windermere Rd: the concept of an Edge Lane Road. This initiative, presented as a Notice of Motion to the Launceston Council, is being driven by Councillor Alan Harris. The primary focus is to enhance safety for pedestrians and cyclists in the area, a concern that has grown in light of feedback from the local residents.

The foundation for this proposal can be traced back to March 10, 2022, when Councillor Danny Gibson initially presented a motion about pedestrian and cyclist safety on Windermere Rd. Residents had reached out to the Council, expressing their concerns about near misses involving vehicles. In response, the Council has approved new safety measures, including a 'welcome sign' at the Swan Bay end and additional pedestrian warning signs. The need for a more comprehensive solution has led to the current action.

So, what exactly is an Edge Lane Road? This road design, utilised in several countries worldwide, aims to create a safer environment for non-motorised road users. Typically, an Edge Lane Road features two paths on each side of a single lane for vehicles, with widths ranging from 1.5 to 2 meters. The recommended speed limits of 30kph or 40kph serve to ensure added safety. When vehicles approach one

another, they can conveniently manoeuvre into the edge pathway, giving way to any foot or cycle traffic, to pass each other without incident.

Councillor Harris draws an analogy to navigating a gravel road, where drivers instinctively move toward the center to avoid potholes. When encountering another vehicle, both can shift towards the edge, facilitating a safe pass. While Edge Lane Roads are uncommon in Australia there is an example along the Esplanade at Coles Bay, where the integration of a single lane with pedestrian pathways has reportedly improved safety for pedestrians and cyclists alike.



EDGE LANE PROPOSAL Continued

The current motion seeks to initiate a feasibility study to assess the implementation of the Edge Lane Road concept as an enhancement to the previously agreed-upon signage improvements. This assessment will provide insights into whether this type of roadway treatment is a practical and safe solution for Windermere Rd.

Community engagement is pivotal in this process. The feasibility study will involve consultation with the Windermere community alongside other relevant stakeholders, including the Tasmanian State Government and the Transport Commission. This involvement will ensure that any developments comply with Australian Safety Standards.

Instead of applying the concept to the full length of Windermere Rd from John Lees Rd to the Church, a more targeted approach will be taken, focusing on a specific trial area still to be determined. The proposal timeline sets the feasibility investigations to commence in 2026, with a comprehensive report expected to be submitted to the council by the end of that year.

Ultimately, ongoing community consultation will be at the heart of this initiative, fostering collaboration between residents and local authorities to create a safer road environment that effectively addresses the concerns raised by those who travel Windermere Rd. As discussions progress, community input will be crucial in shaping the outcome of this potential safety measure.

The motion to council, to investigate the feasibility of an Edge Lane Road along Windermere Rd., has been submitted for placement on the agenda at the Meeting of Council to be held on 11th December 2025.

Editors note: This article is intended as a non-biased report, to inform the community of the motion to council, and explain the concept of Edge Lane Roads

JUST IN TIME FOR CHRISTMAS! *Windermere Church Forever Inc.* has for sale a

collection of local history books, prints and mugs associated with the beautiful little historic St Matthias' Church in Windermere. If you are looking for a special and original Christmas gift for someone with connections to our area then look no further! Below is a selection of items just perfect for your loved ones (or for yourself!).

Contact June on 0411 567 029 to make your purchase.



MUGS: St Matthias Church pen and ink drawing on mug, with gift box **\$12.00 each or 2 for \$20.00**

BOOKS: "WILD OATS" by Jo Callaghan – much awaited reprint! **\$38.00**
"TAMAR SEED" by Jo Callaghan **\$40.00**
"IN THE SERVICE OF DR GAUNT" by Jo Callaghan **\$35.00**
"THE DIARY OF MRS FRANCES GAUNT (As it might have been)" by Judy East **\$20.00**
"ST MATTHIAS' CHURCH Windermere. 1843-2018. OUR PAST – OUR FUTURE – 175 YEARS" **20.00**
"DOWN WINDERMERE WAY" by Judy East **\$10.00**

PRINTS:

PEN AND INK DRAWINGS PRINTS – TWO LIMITED RUN

PRINTS (numbered) by Eileen Cochrane

Unframed portrait or landscape A4 size **\$10.00. SPECIAL – purchase one of each for only \$15.00!**

"FULL MOON" PRINT of a rare original photograph taken in 1939 by H J King, well known Tasmanian photographer. This print is exclusively available through WCF. The story of the photograph was featured in **Smoke Signals** in June 2025.

FRAMED A3 SIZE PRINT including **bonus** Story Card **\$48.00**

FRAMED A4 SIZE PRINT including **bonus** Story Card **\$28.00**

FRAMED A5 SIZE PRINT including **bonus** Story Card **\$18.00**

UNFRAMED A5 SIZE PRINT including **bonus** Story Card **\$10.50.**

GREETING CARD – A6 size - with coloured envelope **\$7.00**

POSTCARD – A6 size **\$4.00**

WCF wishes to acknowledge the wonderful support from **all** of you in our community and beyond and wish you all a very **Happy Christmas and New Year**. If you would like to become a member to further support us, you can join for as little as \$10 single or \$15 per household per year. Membership form is available on our website at: <https://www.windermerechurchforever.org/about-contact/> or by contacting **June on 0411 567 029**.

GARDEN CLUB NEWS

OCTOBER - Garden Club had planned to visit Arnold's Country Garden in Lilydale, however heavy rain and strong winds put an end to that. We have visited this lovely garden before (about 3 years ago), so we will certainly plan to visit again in the not-too-distant future. However, all was not lost! Two of our local Swan Bay gardens were opening for a planned visit by two other Garden Clubs – Longford and Westbury, and our members were also invited!



Ken and Fran's garden has been developed from a 2-1/2 acre horse paddock over the last five years and has seen a remarkable transformation! Ken and Fran have done a wonderful job of creating separate areas such as The Forest, Wolf Paddock and Home Paddock, and the many trees they have planted are growing very well!



"The Elms" – Cheryl and David's garden is three years old and is



already looking very well-established. They have created three stunningly beautiful interconnecting gardens, each with a different theme to acknowledge special places they have travelled to as well as a previous home in the Dandenong Ranges in Victoria. The roses and irises, archways and water features are amazing.

Both of these gardens are a credit to their creators, and I am sure that Westbury and

Longford Garden Clubs will be talking about these two beautiful Swan Bay gardens, for many years to come!



NOVEMBER - "Aberystwyth", in Gravelly Beach was our destination in November –



and what a garden it is! Katy has created a beautiful and meticulously maintained garden, and.... she built the house herself! She has successfully incorporated wonderful artworks fashioned from mementos from her equestrian days and has



a wonderful artistic eye for detail. It was an inspiration to us all!

Dilston Windermere and Swan Bay Garden Club

has enjoyed a wonderful year of many and varied gardens. Our final gathering for 2025 will be our Christmas Party at Ducks Bar and Restaurant in Rosevears. If you would like to join Garden Club, please contact me (Kerri) on **0407 447 344** or send an email to **DilWinSBGardenClub@gmail.com**

How Ornamental Gardens in Tasmania Impact Native Birds and the Call for Wildlife-Friendly Landscapes (continued from our October edition)

Beyond Birds: Wider Ecological Impacts

The impact of ornamental gardening extends beyond feathered residents. Many native insects, including butterflies, native bees, and beetles, depend on specific plants for food and habitat. When these plants are replaced by exotics, insect populations suffer—a loss felt up the food chain by lizards, frogs, and small mammals, as well as birds.

Worse, some imported ornamentals become invasive, outcompeting local flora and further altering the ecosystem. Agapanthus and ericas, for example, are now classified as environmental weeds in parts of Tasmania, spreading well beyond the garden fence.



erica scoparia (Besom heath)

Redesigning gardens for birds and fauna

Acknowledging the unintended consequences of ornamental gardening does not mean a return to “wild” or unkempt backyards. On the contrary, it provides exciting opportunities to design gardens that are both beautiful and alive with native species.

- Incorporate native plants: Choose Tasmanian endemic species such as banksias, grevilleas, bottlebrush (callistemons), and paperbarks (melaleucas). These offer nectar and shelter for honeyeaters, silvereyes, and wattlebirds. Native grasses provide seeds and habitat for finches and wrens.
- Layer plantings: Design gardens with multiple strata—groundcovers, shrubs, understory, and canopy trees—to mimic natural bushland. This creates nesting sites and protection from predators, as well as a greater variety of food sources.
- Select plants with staggered flowering and fruiting times: Ensure a year-round supply of food by choosing plants that bloom and fruit at different times. Consult local nurseries or local people guidance.
- Retain old trees and dead wood: Mature eucalypts, even when partly dead, are lifelines for parrots and rosellas. Hollows provide nesting sites, while peeling bark harbours insects.
- Limit use of pesticides: Insect life is critical to the diet of many birds and pollinators. Embrace natural pest control where possible, encouraging a balance of predators and prey.
- Provide water: Birdbaths or small ponds offer drinking and bathing opportunities, particularly during dry spells.
- Link gardens with corridors: Coordinate with neighbours to create wildlife corridors, allowing fauna to move between gardens safely and find resources across a broader landscape.

Planning Policy and Community Action

Councils can play a significant role in reversing the trend. Planning guidelines that encourage, or even require, a percentage of native plantings in new developments can help. Public planting programs, weed removal, and the establishment of demonstration gardens all raise awareness and inspire change. Write to our local council. They will often respond to community led initiatives positively.

Crucially, fostering pride and appreciation in native plants—celebrating their subtle beauty and ecological value—reframes the conversation. The soft green sheen of a she-oak, the intricate blooms of a native orchid, or the silver trunk of a young eucalypt: these are sights as deserving of admiration as any rose or tulip.

Conclusion: A New Vision for Tasmanian Gardens

In Dilston, Swan Bay, Windermere, and Hillwood, the challenge is to balance our love of ornamental beauty with the urgent needs of the creatures who share our landscape. By embracing native plants and designing gardens for birds and fauna, we can restore lost connections and ensure that the twilight air is once again alive with the trills, whistles, and rustlings of wild neighbours.

The gardens of the future need not sacrifice beauty for biodiversity. Instead, they can become sanctuaries—vivid, living mosaics where human artistry and ecological wisdom flourish side by side, and where both people and native wildlife find nourishment, shelter, and joy.

Dear Smoke Signals editor - Peter

Jon Hosford makes some good points about the need for bird and wildlife-friendly native plants being available in our gardens. When we downsized and moved further down the road to our current property, one of the first things we noticed was the lack of birds who'd been regular visitors at our former home. Although we'd moved to a property with a well-established garden, it contained very few native trees and bushes. Lovely as they are - and as Jon says - colourful and scented bulbs, and ornamentals such as roses and other exotics don't offer much in the way of food for native birds, so we did set about replacing some of these with native plants. John planted out some of the cuttings he'd propagated or grown from seed, taken from established native trees and bushes from our previous property. A few years on and most of these have grown and matured, with many proving to be a valuable pantry for birds (and bees) that we're seeing for the first time since living here so clearly word has got around. Others provide shelter and a safe haven for smaller birds seeking to avoid the larger and more aggressive introduced species. As some in Garden Club know already, John is a valuable resource when it comes to advice about which native plants are the best and most suitable to grow in our area. He's always happy to help so contact Smoke Signals for contact details if you'd like some advice about what to plant in your garden.

Yours sincerely

Anne Layton-Bennett
SWAN BAY
7252

ARTSPLAY

ArtsPlay @ Windermere is a collective community arts project providing for local and wider community members to play with arts materials, musical instruments, spoken and written words and ideas. Curated spaces invite personal and interpersonal creativity.

The project is hosted at Di's private home/studios on the banks of kanamaluka - East Tamar. No previous experience necessary. Sessions are offered at no cost and include:

- Visual and performance Arts, Mondays - 10.30 am to 4.00 pm
- Ad Hoc Ratchet River Band Jam, 2nd and 4th Saturday of each month - 4.00 pm to 7.00 pm
- Julia Cameron's Artist Way Course Gatherings, Monday evenings (13 weeks), TBA
- Arts Exhibitions and Artist in Residence Special Events, TBA

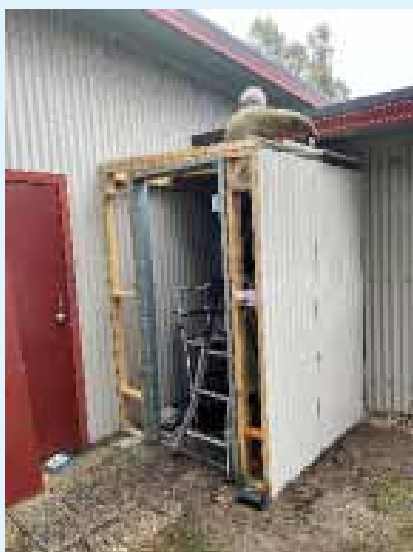
Please contact Di on 0400 389 107 for further information, to register interest or book attendance.



The Ratchet River Band
at the Hillwood Makers
Market

It has been a busy couple of months at the Men's Shed with lots of little projects brought to us to help the Hillwood, Windermere and Dilston communities. There have also been some excellent donations of some fine Tasmanian timber from older furniture which sadly is no longer "in style" and won't even be taken by the tip shop. The Shed is great at disassembling these and re using the wood, which apparently would just go to land fill. Contact us if you have things that are too good to throw away.

One not so little project which is $\frac{3}{4}$ finished has been building a small shed attached to a larger one, to house a generator. This has involved many members in the planning, purchasing of materials and assembly. Although progress has been held up by the weather, it should soon be finished



The other big event this month, after months of planning, and delays, once again due to the unusually wet spring, has been the delivery of our second container, which is a fully lined and ventilated site office. The members of the Shed would like to thank the Tasmanian Government for awarding the grant which enabled the purchase and delivery of the container which has immediately been put to good use. Planning permission and delivery to the location allowed, had its challenges, but the result has been worth the effort.



**For membership enquiries, please contact our President,
Ken Martin on 0412 46 42 49**

ETMS is assisted by
equipment grants
from the Tasmanian
Government.



CHURCH NEWS St Matthias' Anglican Church

Church News. St Matthias' Anglican Church 431 Windermere Rd (part of Holy Trinity Parish)

Services held 2nd and 4th Sundays 9:30am. Other weeks at Holy Trinity CBD centre (cnr George and Cameron).

Christmas in Launceston is starting on Dec 3rd, with the opening of The Launceston Christmas Nativity Display at Holy Trinity in town, and this year it is going "next level"...over 100 depictions of the Nativity scene! Open daily 11am-2pm. Why not drop in for a quiet moment from your hurried shopping, and reflect on the true Christmas story? It is sure to be appreciated by all: young and old. Free entry. Giveaways for the children.

Watch out for Mary and Joseph arriving at the church gates closer to Christmas Day!



Then Christmas Eve will bring the annual Community Carols Service at 7pm, in the grounds of the church. So bring a folding chair, warm clothing, your best singing voice and your heart open to the joy and hope of Christmas. (This will be held indoors if weather is too inclement) Enjoy catching up with your fellow community friends afterwards over Champagne, juice and nibbles, then Communion will be offered to all interested at 8:30pm. During the carols, an offertory will be taken to support the ministry of the church.

Thanks to the 17 adults (and 2 children) from the community and parish who helped at the annual Working Bee on Nov 22nd: you made a great impact on the grounds and interior of our historic treasure. Well done!

The Service of Remembering on All Saints Day (Nov 1st) was a beautifully peaceful, reflective and moving experience. We have sadly lost too many church family and community friends recently, and this service gave the large group present a chance to light a candle in their memory (photo above), and the space and quiet time to reflect on our hope through Christ's life and resurrection.



Wishing you all a peaceful, joyous and blessed Christmas. Rev Lee Shirvill (0468489068) See us on Facebook !





Tasmania Fire Service

Dilston and Hillwood Fire Brigades

Register your burn offs and fires by calling freecall 1800 000 699

By letting us know, you will help to prevent false alarms!

BRIGADE ACTIVITIES

Both brigades have been active in the recent months, both with community engagement and response to emergencies.

Hillwood brigade recently attended the Hillwood farmer's market, with great conversations reported from information on recruitment, to home and wildfire safety.

Both brigades have been engaged in hazard reduction burns on both sides of the river, including Bullocks Head Road (for Hillwood) with this work being an important element in reducing the risk of wildfire impact on the Tasmanian Community.

In addition there have been a number of significant fires that both brigades have attended, most notably at Turners Marsh, and at Lefroy in recent weeks.

These fires burned freely through the landscape, both fed by wind that provided challenges in controlling the fire spread. Aviation and ground (bulldozers) were essential tools in this task along side the ground crews that worked at times, around the clock.

As much and no one wants these incidents to occur, they have provided valuable opportunities for new members of both brigades to put their new skills into action!

A healthy influx of new members has helped with crewing numbers but we are still keen to receive further interested parties.

Register an EOI at www.fire.tas.gov.au/ volunteers or scan the QR code to get in touch with either brigade, and make a difference!



PERMITS

...are still to be announce at time of writing, but we are expecting them soon enough. Remember that you can request a permit via the digital permit request system that is in place at my.service.tas.gov.au.

Thankyou to community members for their patience during the transition to the new system in 2024, and for continuing to register those burn offs that are under 1 cubic meter.

Brigade members are available to answer all your questions, and there is plenty of information on the fire service website fire.tas.gov.au.



SANTA LOLLY RUN 2025

Santa will be making his way around Dilston Windermere and Swan Bay again this year per the flyer over the page.

The Santa Tracker will indeed be live again, with a link to be provided closer to the day.

The link will be advertised on the brigade and community socials and we very much look forward to seeing you all out there!



.../DilstonFireBrigade
.../TasmaniaFireService

Dilston Fire Brigade Contacts

Raoul Stow	0417 351 423
Paul Blakie	0417 592 424
Ben Jones	0417 877 001
Ken Nolan	0448 320 996

Hillwood Fire Brigade Contacts

Elaine Burns	0417 540 665
Sharon Clarke	0417 600 571
Leon Hodges	0409 169 288
Andy Kendall	0427 818 282



**DILSTON FIRE BRIGADE ANNUAL
CHRISTMAS LOLLY RUN**

SUNDAY 21nd December, 2025 from 1pm

Travelling from **Peddie Drive** to **Dilston** and **Rostella**,
then **John Lees Drive** to **Magazine Road**,
Windermere Road Nth to **Native Point**, then **Los Angelos**
Road, **Sanwae Drive**, **Walford Rise**,
and finally **Windermere Road Sth**.



HILLWOOD NEWS

HAPPY NEWS:

In a touching tribute to a man whose life has been defined by service, the Royal Flying Doctor Service (RFDS) Tasmania has renamed its education simulator the "Lindsay Millar OAM", celebrating Lindsay's remarkable 60 years of dedication to the organisation and his enduring impact on Tasmanian healthcare.

The simulator plays an key role in RFDS's Tasmania's education program. As it travels the state, it will not only carry medical knowledge but the story of the man who made it all possible.

From left: Lindsay Millar OAM, his daughter Katherine



Congratulations to Iain Nixon of Mt. Direction on his outstanding 40 years of service to the Emergency Response Team at Bell Bay Aluminium. Iain Nixon is also a long-standing member of the Hillwood Fire Brigade. It's very reassuring to have such expertise in our local brigade.



Congratulations to Tami Schwank of Mt. Direction on receiving the Velocity Gymnastics Coach Award for 2025. Tami is the coach for West Tamar Gymnastics at Exeter, at Lilydale and PCYC Launceston.

Tami bought some gymnastics equipment to the Makers Market and Family Fun Day and it was a real hit. Thank you Tami.



Kristen Barwick, (Granddaughter of George Town Councillor and Mt. Direction resident, Heather Barwick) recently toured with the Western Australia Ballet Company to Victoria and now to Singapore! Heather, a long-time supporter of the Tamar Valley Folk Festival loves the Arts and appreciates those who bring the Arts to the Community. The Tamar Valley Folk Festival is to be held 16-18 January 2026.

SAD NEWS: Friends and Family of Greg Lundstrom gathered from all over Australia to his home at Mount Direction to remember a kind, passionate man with a great love of the environment. Greg who passed away in July, wished to be laid to rest in one of his favourite places, on his property in his native plant wetlands. Greg's work with Tamar Natural Resource Management followed a long career in environmental work on the mainland before moving to Tasmania with his wife Chris.

HISTORY ROOM

Come learn about the history of Hillwood. Lots of stories, still more being collated.

Great strides are being made in the "Who's been living in my house" Project, we are now expanding into the Mt. Direction area. Do you live in an old house and would like to know the history?

Like to check out our History Room? Phone Julie Airey on 0408 275 539 or we are at the Hall, most Thursdays from 10am till 12

TRIVIA NIGHT



Congratulations to the "AssPro & Co." Team on Winning the 2025 HPA Trivia Night, after the 3rd Question in the sudden death tie breaker with Fire brigade team "On Fire" coming a close second. "On Fire" maintain bragging rights at the Station over "The Scorchers".

Wooden spooners "Party Mix" were still smiling and will be back next year to have another go.

Thank you to all those who donated prizes for our balloon tree. Marigolds Café, Kilmaren Gardens (Karoolla) Hillwood Whisky, Nick Duigan, Greens Flower Farm, Hillwood Football Club, Alison O'Brien & Michaela Duffin-Barrett.

We raised over \$1600 towards the Tennis Court Revamp. Well done.

Thanks to Bron Davies (pictured) for MC'ing the night. To Tom Gunn for his role as Quiz Master and Anne Green for adjudicating again. You all helped make the night a great success.

CLEAN UP AUSTRALIA!

Hillwood's Clean up Australia in October yielded around 490kg of rubbish! Egg Island Point was found to be a popular dumping ground for rubbish of all kinds. A number of tyres had been dumped over the bank into the water's edge on Craighburn Road. If you see someone littering from a vehicle or vessel, please report this via the EPA Report Littering page or call the Litter Hotline on 1300 135 513. Let's keep this rubbish out of our water ways. Thank you to the George Town Council for supporting this event. To thank the volunteers, we shared a sausage sizzle at the new BBQ at the Pontoon Park.



BONESEED BLITZ



On Egg Island

Kay Bailey from Tamar NRM said "It was great to see the work achieved by the Hillwood Progress Assoc in the Hillwood area. Each year we are building on what has been achieved and it is making a big difference."

Thanks to Tamar Sea Rescue for transport to the Island, it took just under an hour to clear the island of regrowth from last year. Great job! Andy & Kay pictured on the Island with the Tamar Sea Rescue boat in the background.



Karen Crane from the Launceston Benevolent Society Incorporated recently attended a Hillwood Progress Meeting to talk about the longest continuously operating welfare agency in Australia and the work that the society does. Incorporated in 1834, they are a unique charitable organisation, in that they do not sell or operate retail shops, instead all donations of food, clothes and goods are passed on to their clients free of charge. They work with other agencies to provide relief and support to disadvantaged people in the wider Launceston community. The Launceston Benevolent Society were the recipients of funds raised at this year's Anzac Day Dawn Service Breakfast.

HILLWOOD FOOTBALL NEWS: 100 YEAR CENTENARY 2026



The Hillwood Football Club 2025 ANNUAL GENERAL MEETING is to be held Tuesday 9th December at 6pm at the Hillwood Football Clubrooms. Welcoming new and current members. Together we can shape the future of our great club. Meet our coaches for 2026.



Armchairs - Hillwood

EVENT DETAILS

Fridays 11am - 12pm September to January

FREE

EVENT LOCATION

Hillwood Memorial Hall
278 Hillwood Jetty Rd
Hillwood Tasmania 7252



Low impact activities designed for anyone doing little to no physical activity. Armchairs will include exercises that can be done in your armchair at home.

Please wear comfortable clothing, bring a drink bottle and arrive 15 min before the start time.

Heather and Paul Ferguson were one household of several in Hillwood who decorated their yard again this year for Halloween. (No that's not Paul in the photo!!!)

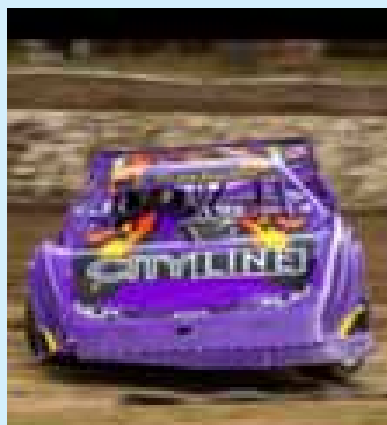
They used the day to raise funds for Make a Wish foundation.

What a great display.





Local Hillwood racer, Brendan Flynn enters his 5th season in super sedans for the Tasmania speedway series,
Current race car is an insane chassis with chev v8 dry sump methanol engine.
Currently entering the 3rd round of the 2025/2026 at Latrobe with a 4th place at Carrick in the feature race, with the month of madness coming up in January for Tasmania he will compete against Australia's best super sedan drivers across 3 tracks of Carrick, Latrobe and Hobart with over \$110,000 dollars of prize money across 8 nights of racing it is sure to be a spectacle. Get out and support local drivers.



2174 East Tamar Highway Mt Direction Tas
TDY Caltex service station

Mon-Fri	5.30am-6pm
Sat	7.30am-5pm
Sun	8am-3pm
Public holidays (times may vary)	7am-3pm

24-hour fuel
Post office agency
Hot and cold takeaway food, grocery items
Fishing gear, bait and ice
Range of Penrite oils and other car care related products

TDY Enterprises

Workshop opening hours:

Mon-Fri 8.30am-5pm

We offer pre-split firewood sales and landscaping supplies with delivery available
Certified inspection station (cars, Trailers and motorbikes)
Offering a range of mechanical repairs, diagnosis and Logbook servicing for all vehicles including but not limited to lawn mowers, horse floats/caravans and right up to heavy machinery.

THANK YOU TO OUR PAST AND PRESENT CLIENTS

To all the homeowners, businesses, and partners who have trusted us with your building projects —

THANK YOU.

Your support has allowed us to grow, innovate, and continue delivering quality craftsmanship in every build. We are grateful for the relationships we've built and the projects we've brought to life together.

We're excited for the future and ready to help new clients bring their visions to reality.

Whether it's a renovation, extension or new build -
we're here to build it right.

We wish everyone a safe and relaxing holiday season.



sales@sjeconstructions.com.au

0438 587 969
6330 1310



WESTGATE

Landscape & Building
Supplies

Discounted delivery*

for Windermere/Dilston
area!



*Terms and Conditions Apply

TAMAR *Blinds* .com.au

Free Measure and Quotes

Marie Gray
0438 316 831
sales@tamarblinds.com.au



- Local Swan Bay business
- Indoor blinds and drapes
- Tamarblinds.com.au
- Call Marie 0438316831
- Check us out on facebook




TOWN & COUNTRY


REAL ESTATE TASMANIA

Kathleen Gee

0466 679 668
 kathleen@townandcountryre.com.au


Your Local Area Specialist

Suite 26, 19 Paterson Street, Launceston, TAS, 7250



GROUND BREAKING
EXCAVATIONS

- Experienced and reliable
- 5t excavator and tipper truck
- Trenching & drainage, rock breaker, post hole boring and more
- General site works
- Landscape works
- Livestock/pet burials



Chris Grant
 ☎ 0487 033 787
 ✉ groundbreakingexcavations@outlook.com



15 years experience

All aspects of tree care including:

- Tree removals, trimming, shaping and on site mulching.
- Climbing arborist and cherry pickers up to 28m.
- Excavator, PosiTrak, wood splitter and mobile sawmill.



Qualified - Reliable - Fully insured
 Jesse Eastman, 0490 192 377, ptctasmania@gmail.com



**NORTH
GRADE
PLUMBING**

Reliable plumber available for:

Maintenance
Hot water cylinders
Drain cleaning
New Builds
Renovations
Light Commercial

Contact Francis on 0400 144 219
northgradeplumbing@gmail.com

Please like us on Facebook!
facebook.com/NorthGradePlumbing



**LADDER
SAFE LEASH**



Working from a ladder? Cleaning the roof, gutters, solar panels, flue? Do it safely with a Ladder Safe Leash.

Go to laddersafeleash.com.au to order online.

Enter the discount code
"Smokesignals" for free delivery.

Community Contacts

FIRE:000

Dilston Fire Brigade
Raoul Stow 0417 351 423

Hillwood Fire Brigade
Elaine Burns 0417 540 665

SES
132 500

Marigolds Cafe Hillwood
6311 0686

Dilston Hall
Launceston Council

St Matthias Church
June: 0411 567 029
Jenny:0419 544 266

Playgroup
Corrie Summers 0448 259 863

**Dilston/Swan Bay/Windermere
Garden Club**
Kerri: 0407 447 344

East Tamar Mens Shed
Secretary: **George Cercez**
secretary@etms.org.au

Book Discussion Group
Jess: 0428 658 988
Jess.Panday@education.tas.gov.au

Scrabble Group
Kerri, 0407 447 344

Justice of The Peace
Nick Jones : 0439 986 698

**Copy For NEXT
ISSUE Due**

Friday, 30th Jan

Email address:
smokesignals@bigpond.com

Editorial decisions for publication
will be made by Peter Mulholland:
mulholl2@yahoo.com

Smokesignals on the web:
www.smokesignalscn.wordpress



FOR SALE



Ex food industry
- very clean inside.
Water storage for animals,
fire fighting or gardening
\$100 each
PH 0400 637 202

FOR SALE

Water saving
Wicking bed / raised garden
bed bases
With water level fitting
supplied. . \$55 ea
PH: 0400 637 202



Federation Home on 2.17h



Please Call Sharon,

Sharon Fahey, your local
residing Property Agent.
For a free NO Obligation update
on the Market Price of your
home!

0409 188 249

sharon@key2.com.au

- Old Federation home with heaps of character 223 m2 on 2.17 hectares of pasture in a private setting
- Orchard, covered veggie garden.
- Lovely sunny north facing home with wrap around verandas.
- Home has been well cared for and in very good condition.
- Built around 1900 and renovated in 1985
- Large double garage with workshop, multiple sheds

38 Sheppard Avenue, Hillwood

3 -bedroom, 2-bathrooms, 2 - living areas. \$750,000



101 Galvin Street, South Launceston 7249

NEWSLETTER PRINTED BY COURTESY OF

Michael Ferguson

Liberal Member for BASS



Tasmanian
Liberals

P: (03) 6777 1032

PO Box 537 Launceston 7250

michael.ferguson@dpac.tas.gov.au



MichaelFergusonMP

www.michaelferguson.com

Authorised by M. Ferguson 53 St John St Launceston 7250



THE CARPET & UPHOLSTERY STEAM CLEANING SPECIALISTS

We clean with the latest innovative technology, truck mounted machines that generates its own hot water.

Superior drying in less than 6 hours.

Real Estate Approved

Brett and Lilli are husband and wife team with over 30 years experience
This technology is also environmentally friendly, and safe for pets

- Lounge Suite steam cleaning
- Mattress steam cleaning
- Vehicle upholstery steam cleaning
- Boats steam cleaning

Ask Lilli about our FREE RUG CLEANING offer.

No additional charges for basic cleaning that may occur on the job

- Book with a friend and save \$10 each
- Senior and concession card discounts
- Custom packages available on application

P. 6394 9135 M. 0438 778 577

Launceston, surrounding Suburbs

ABN: 9643 104 1939



Like us on
Facebook

eaglecarpetcare.com.au